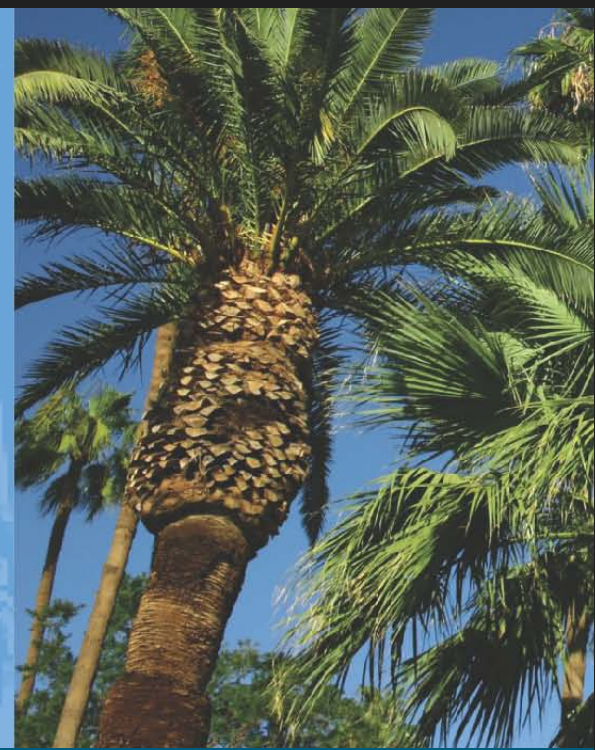


Los Angeles Gateway Region
Integrated Water Management Joint Powers Authority



Development of the Integrated Regional Water Management Plan

March 2012

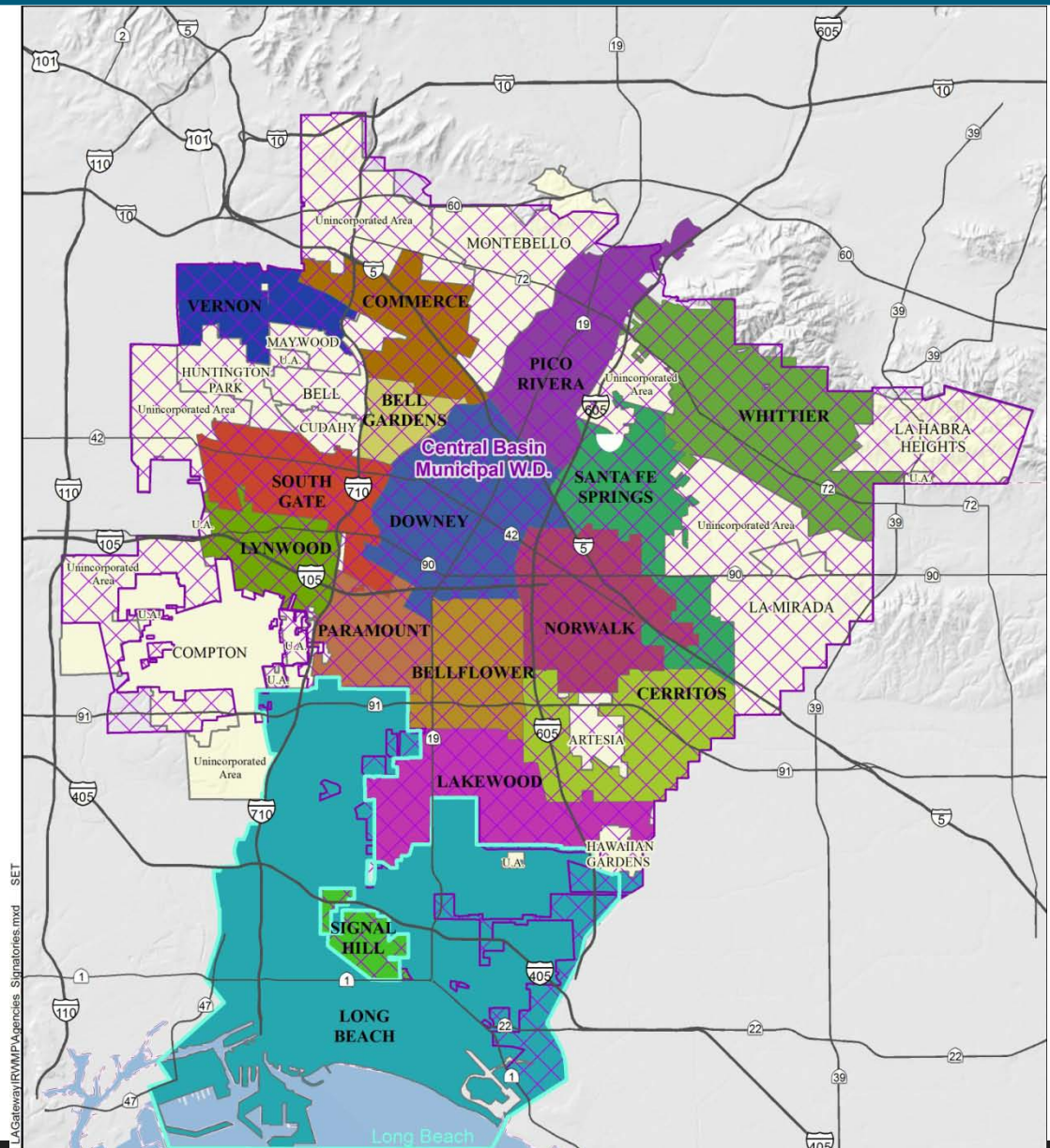




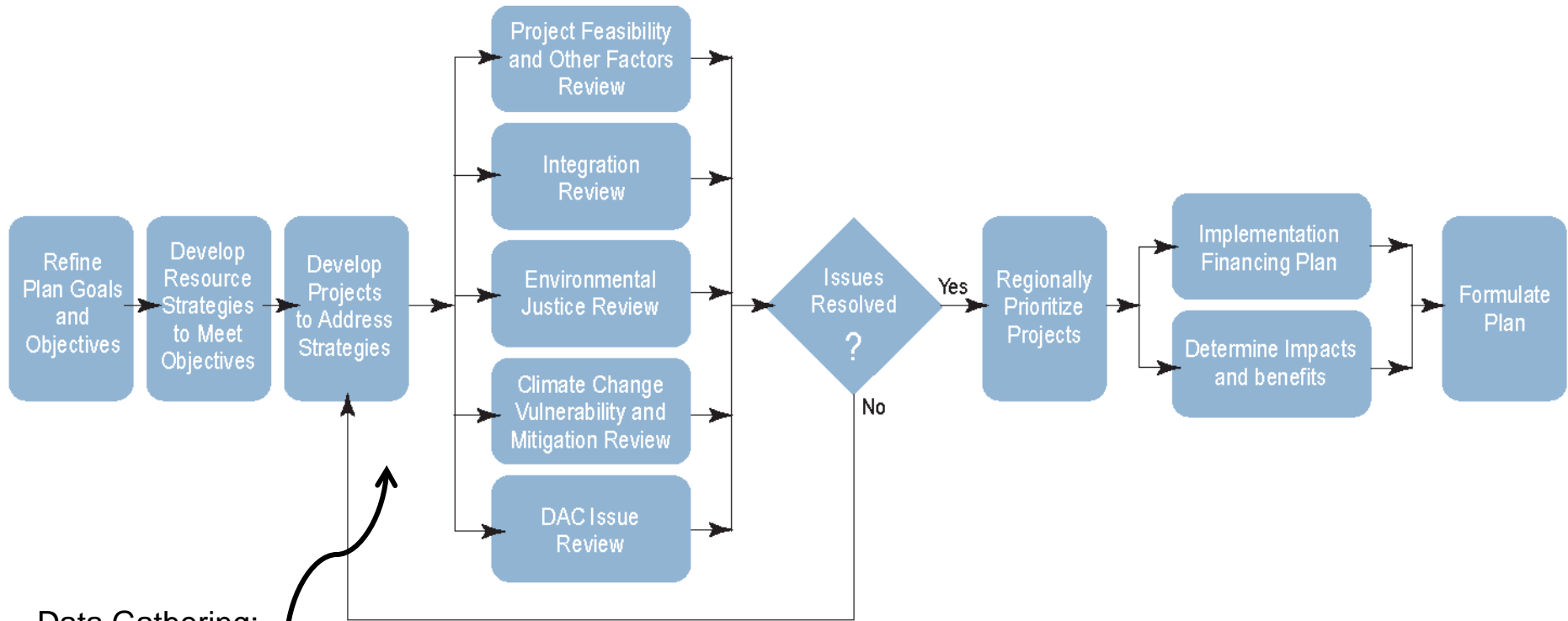
Stakeholder Meeting Agenda

1. Introductions
2. Feb 29 Public Meeting*
3. IRWMP Goals and Objectives
4. Community Outreach Plan
5. Missing Stakeholders?
6. Communications check
7. In-kind Accounting Check
8. Next Steps
9. Questions

The Gateway IRWMP Region

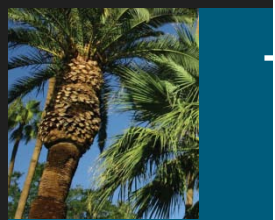


IRWMP Development Process:

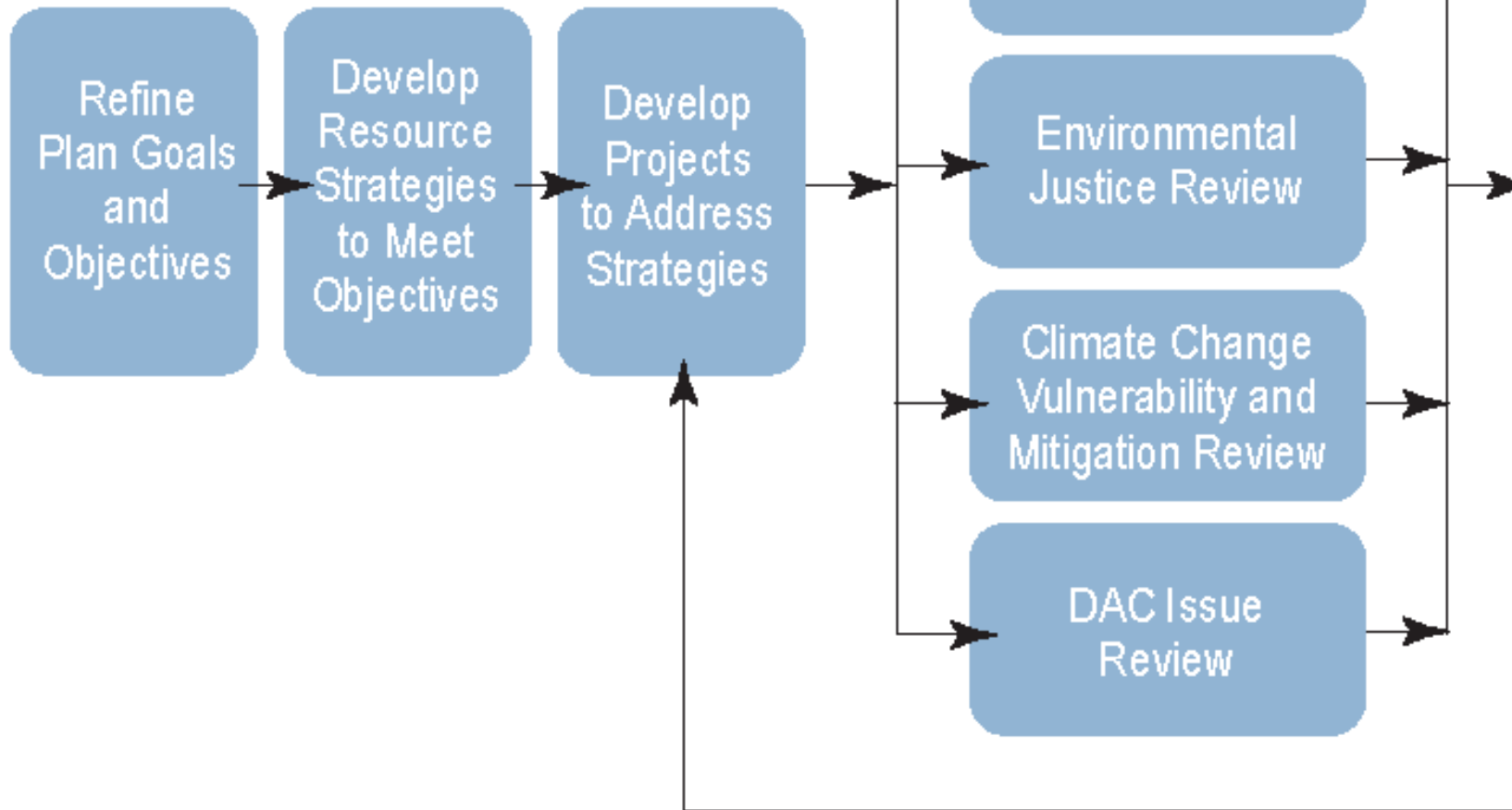


Data Gathering:

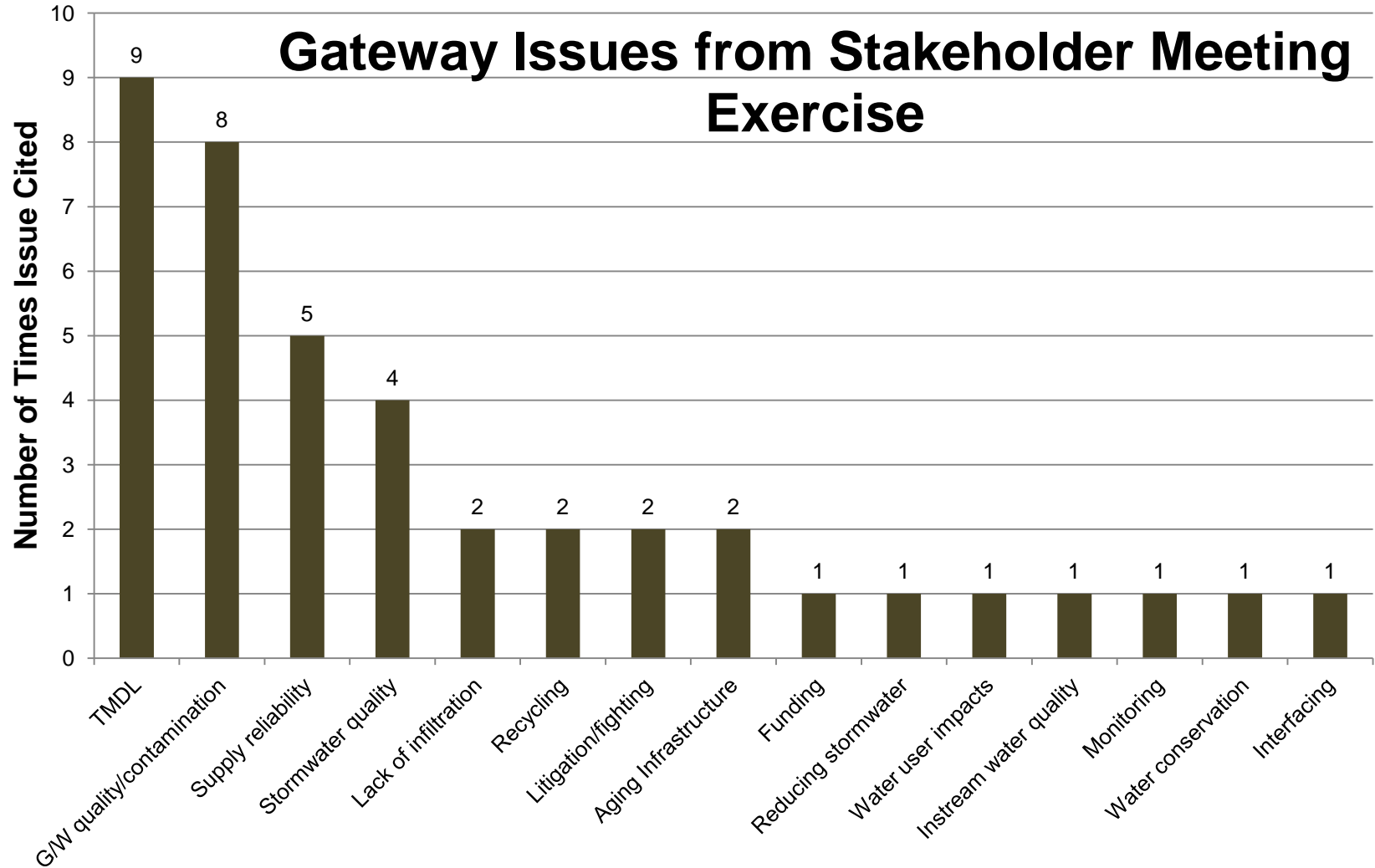
Water balance
Storm water Issues
Water quality data
Review groundwater
monitoring



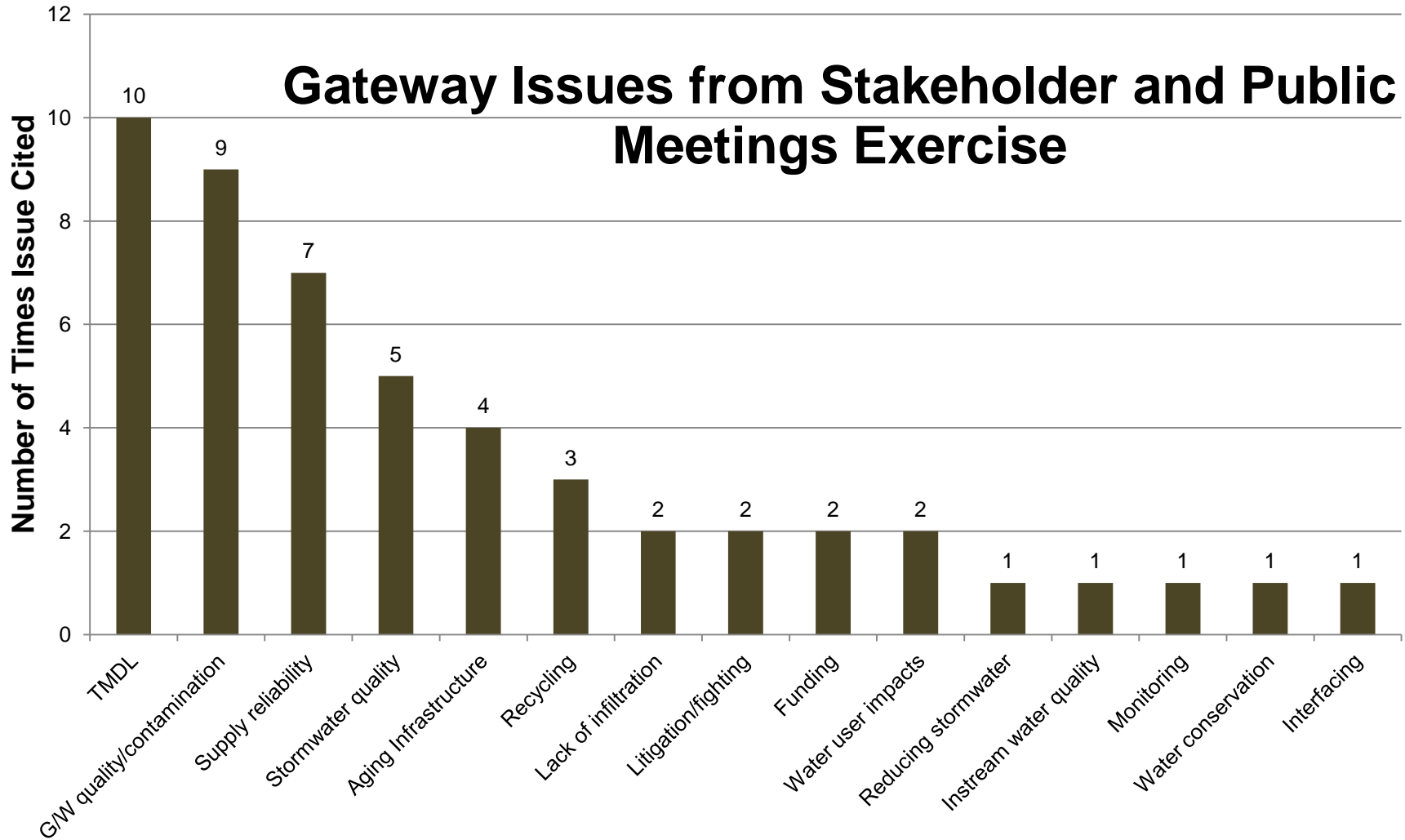
Water Management Issues.....



Water Management Issues from Stakeholders



Water Management Issues from Stakeholders





Gateway Region IRWM Plan Goals and Objectives

Have we covered the important issues?



Goals and Objectives:

- **Projects will be ranked** by their ability to meet the goals of the IRWMP
- Want broad goals to have **flexibility** in for range of strategies and projects
- Want to have a **thorough coverage** of needs
- Want to emphasize projects with **multiple benefits**



Proposed Gateway Region IRWM Plan Goals

- Protect and enhance water quality
- Optimize **and ensure** water supply reliability
- Coordinate and integrate water resource management
- Identify and address the water-related and natural resources needs of the Gateway Region Watershed
- Provide stewardship of ~~our~~ **the Region's** natural resources
- **Manage flood and storm waters to reduce flood risk and water quality impacts**



Gateway IRWM Plan Objectives

- Effectively reduce sources of pollutants and environmental stressors
- Reduce the negative effects on waterways and watershed health caused by hydromodification and flooding
- Construct, operate, and maintain habitat and open space
- Optimize open space and water-based recreational opportunities
- Further the scientific and technical foundation of water management
- Effectively obtain, manage, and assess water resources data and information
- Maximize stakeholder and community involvement and stewardship



Proposed Objectives

- Continue and enhance water use efficiency measures to meet 20X2020 per capita water use targets
- Expand regional water recycling facilities and recycled water distribution to help provide reliable water sources by 2030
- Attain all required TMDL levels by 2020



Proposed Objectives

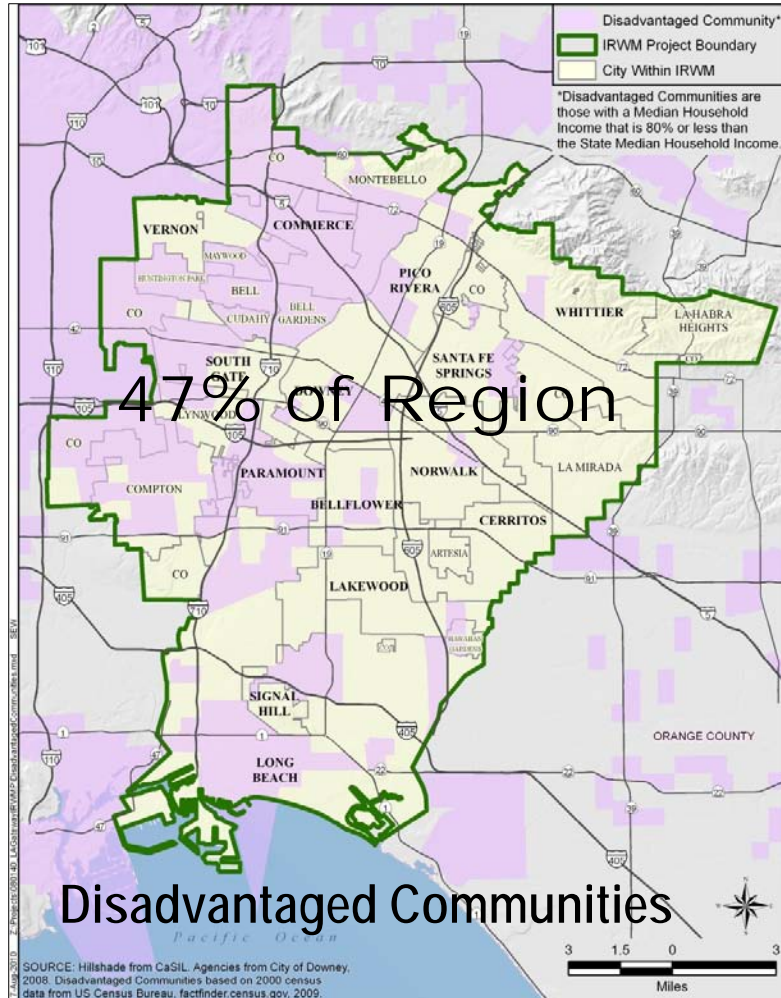
- Systematically upgrade aging water infrastructure in the Region by 2030
- Effectively reduce major sources of pollutants and environmental stressors in the region by 2030
- Install or optimize water monitoring to effectively manage in the Region by 2015. Effectively obtain, manage, and assess water resources data and information



Proposed Objectives

- Create significant habitat, open space, and water-based recreational opportunities in the Region by 2020.
- Other??

Outreach Plan



- Engage stakeholders in the communities
- Involve the diverse community of the region



Stakeholders: Who are we missing?

- **Cities**
- **Water Companies:**
 - Golden State Water Company
 - San Gabriel Water Company
 - California Domestic Water Company
 - Suburban Water System
 - Park Water Company
 - Bellflower-Somerset Mutual Water Company
 - Maywood Mutual #1, #2, #3
 - Pico Water District
 - Orchard Dale Water District
- **Water Wholesalers:**
 - Metropolitan Water District of Southern California (MWD)
 - Water Replenishment District of Southern California (WRD)*
 - Central Basin Municipal Water District (CBMWD) (on JPA)



Stakeholders: Who are we missing?

- **Environmental advocates:**
 - Amigos de Los Rios
 - Heal the Bay
 - Sierra Club
 - Friends of the Los Angeles River
 - Friends of the San Gabriel River
- **Watershed organizations:**
 - National Water Resources Association
 - Council for Watershed Health *
 - Urban Water Institute
 - Southern California Water Committee
 - Center for Watershed Protection



Stakeholders: Who are we missing?

- **Watershed organizations (cont.):**
 - Southern California Association of Governments [SCAG],
 - Los Angeles County Flood Control District
 - Los Angeles County Sanitation Districts *
 - Santa Fe Springs Community Development Commission
 - Port of Long Beach
 - County of Los Angeles
 - Southern California Edison (SCE)
 - Industry Council



- **Tribal Organizations:**
 - Gabrieleno/Tongva Tribe

- **State and Federal Stakeholders:**
 - California Department of Water Resources (DWR)
 - Los Angeles Regional Water Quality Control Board (LARWQCB)
 - San Gabriel and Lower Los Angeles Rivers and Mountains Conservancy (RMC)
 - California Department of Fish and Game (DFG)
 - California Department of Transportation - CalTrans
 - U.S. Fish and Wildlife Service (USFWS)
 - U.S. Army Corps of Engineers (USACE)
 - U.S. Bureau of Reclamation (USBR)



Water Management Strategies:

- Ecosystem restoration
- Environmental and habitat protection and improvement
- Groundwater management
- Storm water capture and management
- Water quality protection and improvement
- Conjunctive use
- Land use planning
- Watershed planning
- Water supply reliability
- Flood management
- Recreation and public access
- Water conservation
- Water recycling
- Imported water
- Storage
- Water and wastewater treatment
- Treatment methodologies
- Water transfers



| | | |
|--|----|---|
| • Conjunctive Management and Groundwater Storage | 8 | Increase Water Supply |
| • Conveyance—Regional/local | 5 | Improve Operational Efficiency and Transfers of Water |
| • Desalination | 9 | Increase Water Supply |
| • Drinking Water Treatment and Distribution | 14 | Improve Water Quality |
| • Economic Incentives (Loans, Grants, Water Pricing) | 21 | Practice Resource Stewardship |
| • Ecosystem Restoration | 22 | Practice Resource Stewardship |
| • Flood Risk Management | 28 | Improve Flood Management |
| • Groundwater Remediation/Aquifer Remediation | 15 | Improve Water Quality |
| • Land Use Planning and Management | 24 | Practice Resource Stewardship |
| • Matching Water Quality to Use | 16 | Improve Water Quality |
| • Pollution Prevention | 17 | Improve Water Quality |
| • Precipitation Enhancement | 10 | Increase Water Supply |
| • Recharge Area Protection | 25 | Practice Resource Stewardship |
| • Recycled Municipal Water | 11 | Increase Water Supply |
| • Salt and Salinity Management | 18 | Improve Water Quality |
| • Surface Storage—Regional/Local | 13 | Increase Water Supply |
| • System Reoperation | 6 | Improve Operational Efficiency and Transfers of Water |
| • Urban Runoff Management | 19 | Improve Water Quality |
| • Urban Water Use Efficiency | 3 | Reduce Water Demand |
| • Water Transfers | 7 | Improve Operational Efficiency and Transfers of Water |
| • Water-dependent Recreation | 26 | Practice Resource Stewardship |
| • Watershed Management | 27 | Practice Resource Stewardship |



Communications

- Sharefile on-line
- E-mail: *GatewayIRWMP@geiconsultants.com*
- Web : *<http://www.gatewayirwmp.org>*



Next Steps

- Goals and Objectives
- GWMA adopts Outreach Plan
 - Implement actions
- Data collection:
 - Water Balance for the Region
 - Water Quality information
 - Storm water issues
- Refine data base tool
- Invite other stakeholders
- **Next Stakeholders Meeting April 12** (Informational)



Questions?