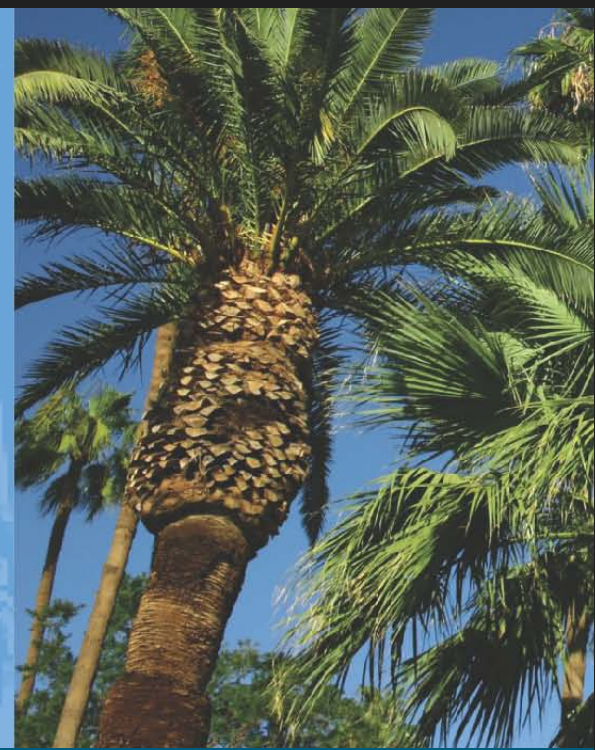


Los Angeles Gateway Region
Integrated Water Management Joint Powers Authority



Development of the Integrated Regional Water Management Plan

February 2012

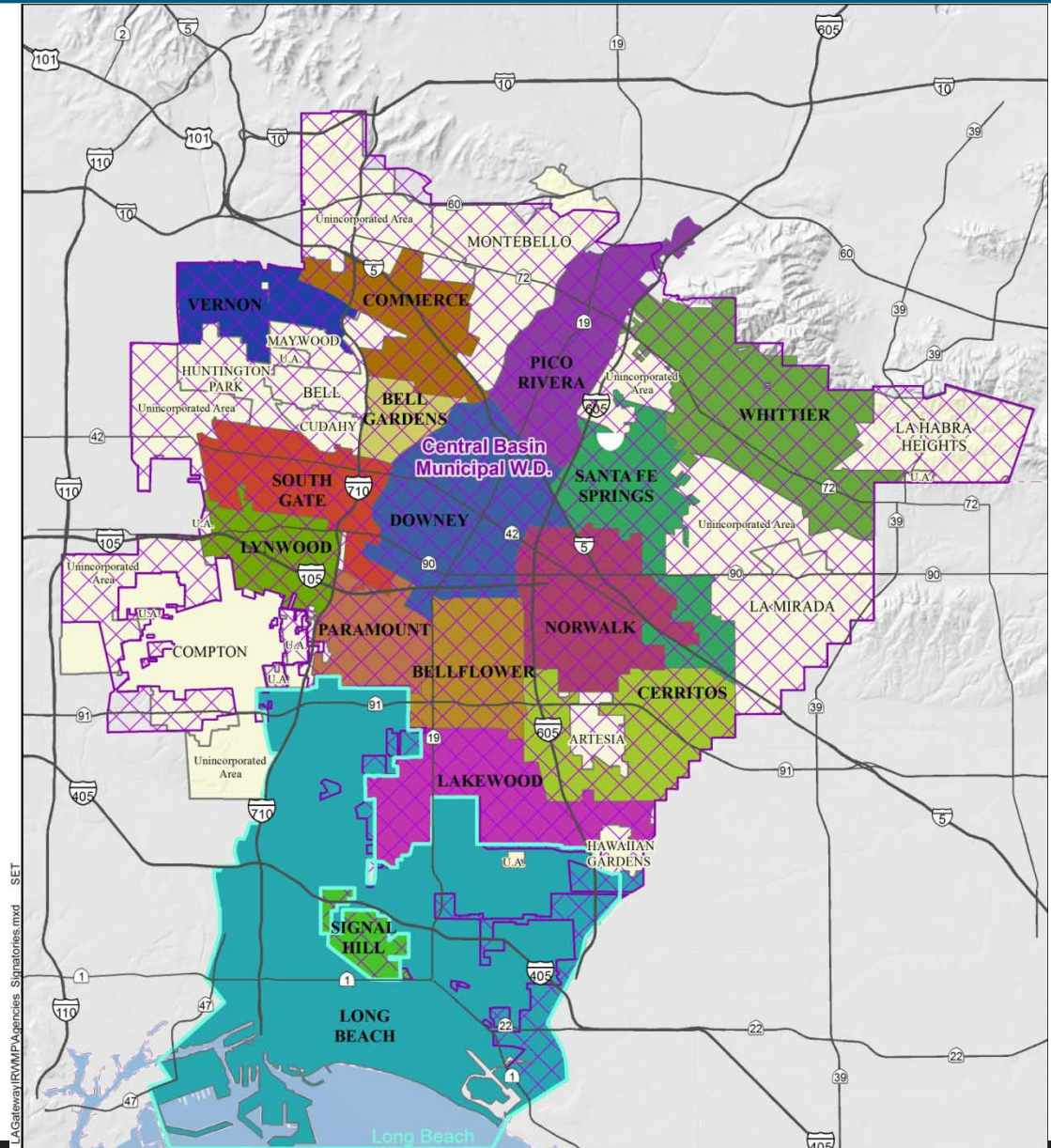




Initial Public Meeting Agenda

1. Introductions
2. Plan Development Overview
3. Review IRWMP Goals and Objectives
4. Missing Stakeholders and Participants
5. Status Community Outreach Plan
6. Data Base Status
7. Calendar/Sharefile/Communications
8. Next Steps
9. Questions

The Gateway IRWMP Region





What is a IRWMP?

- Integrated Regional Water Management (IRWM) is a **collaborative effort to manage all aspects of water resources in a region**. IRWM crosses jurisdictional, watershed, and political boundaries; involves multiple agencies, stakeholders, individuals, and groups; and attempts to **address the issues** and differing perspectives of all the entities involved **through mutually beneficial solutions**.
- A plan for future water management in a region that includes a list of integrated projects



What is a IRWMP?

It's a significant document that :

- Describes the region and its water management
- Reviews water issues
- Puts forward strategies to deal with those issues
- Suggests actions and projects that carry out those strategies
- Prioritizes and integrates those projects
- Provides a path to carry out those projects
- Monitors the progress of its actions



Integration




Projects and planning effort:

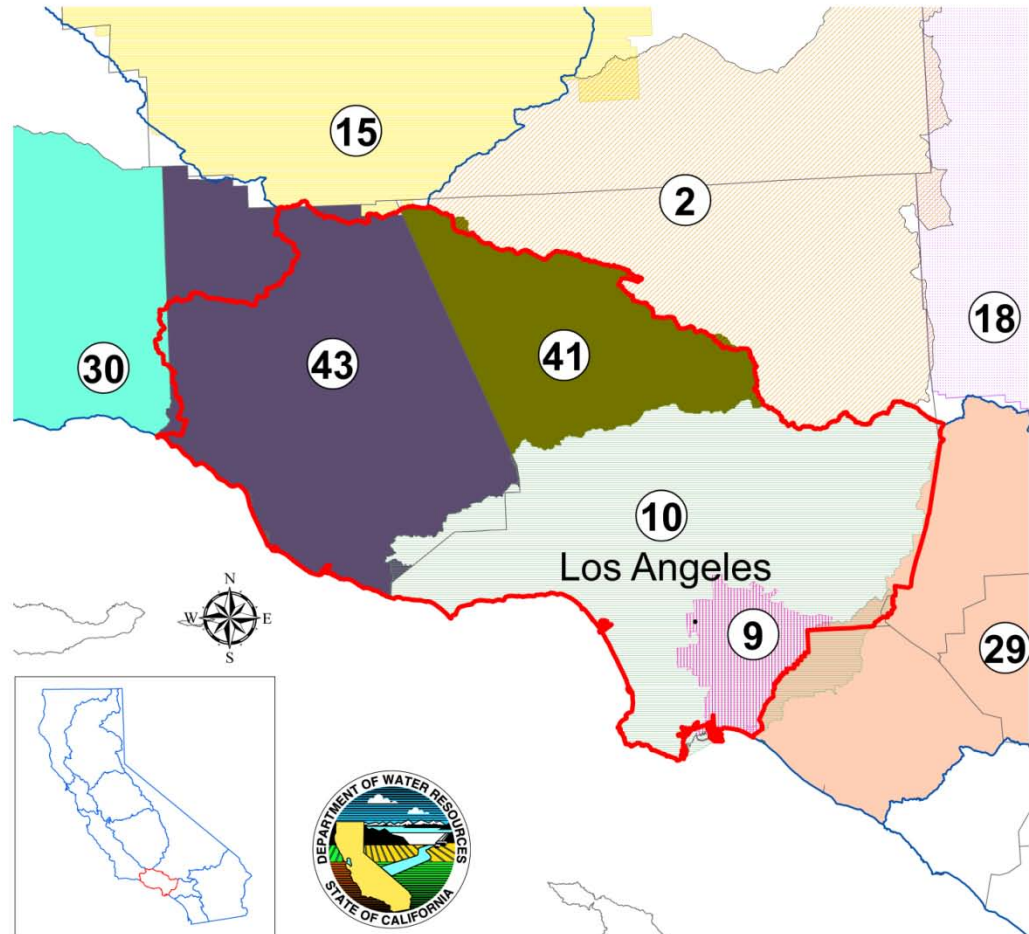
- Compatible
- Complementary
- Multiple and increased benefits for projects

Integration with Neighbors

PROPOSITION 84
Integrated Regional Water Management Program
IRWM Regions
Los Angeles Sub-Region Funding Area

Legend

	Los Angeles Sub-Region Funding Area		(15) Kern County
	Prop 84 Funding Area Regions		(18) Mojave
	County Boundaries		(29) Santa Ana Watershed Project Authority
	(2) Antelope Valley		(30) Santa Barbara Countywide
	(9) Gateway Region		(41) Upper Santa Clara River
	(10) Greater Los Angeles County		(43) Watersheds Coalition of Ventura County



Notes:

- 1) Numbers shown are for reference purposes only and correspond to internal DWR RAP submittal identifications.
 - 2) Region boundaries shown are those submitted by each applicant as part of the RAP submittal.
- RAP 2009 = ID No's 1 - 48
- RAP 2011 = ID No's 47 - 49

0 10 20 Miles



DWR Requirements

- Region Acceptance Process (RAP)
- Guidelines
 - General Items an IRWMP needs to address
 - Climate change
 - Flood and storm water management
 - Outreach to Disadvantaged Communities
 - Integration with Land Use planning
 - Governance of IRWMP



Why an IRWMP?

- “Good” Regional planning
- Consolidated and inclusive water planning effort
- Eligible for
 - Planning Grants
 - Implementation Grants

Proposition 50 – Nov 2002 - \$500 million

Proposition 84 – Nov 2006 – \$1 billion

Proposition 1E – Nov 2006 - \$300 million

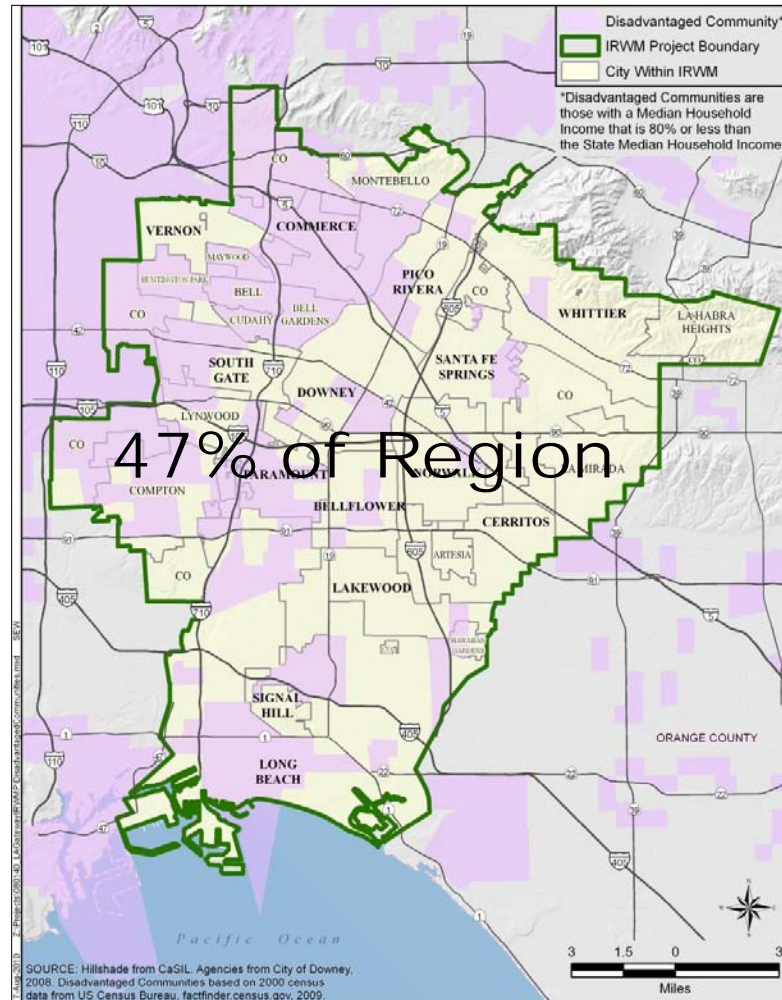
Communications, Outreach, and Engagement

- Engage stakeholders in the communities
- Tools to cost-effective obtain input from the community



Disadvantaged Community Outreach

- Involve the diverse community of the region
- Work with community members to deliver our message

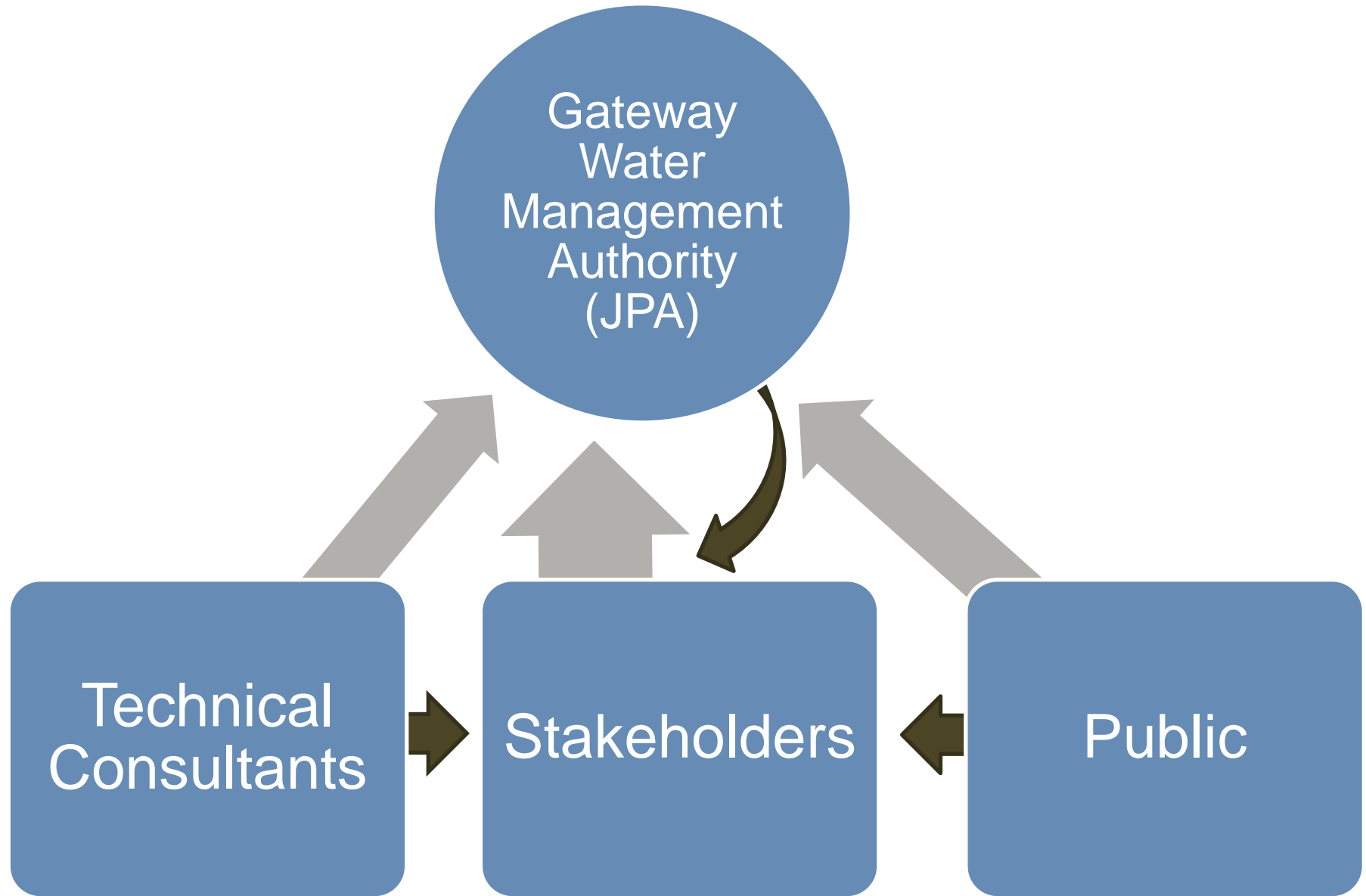


Public Meetings

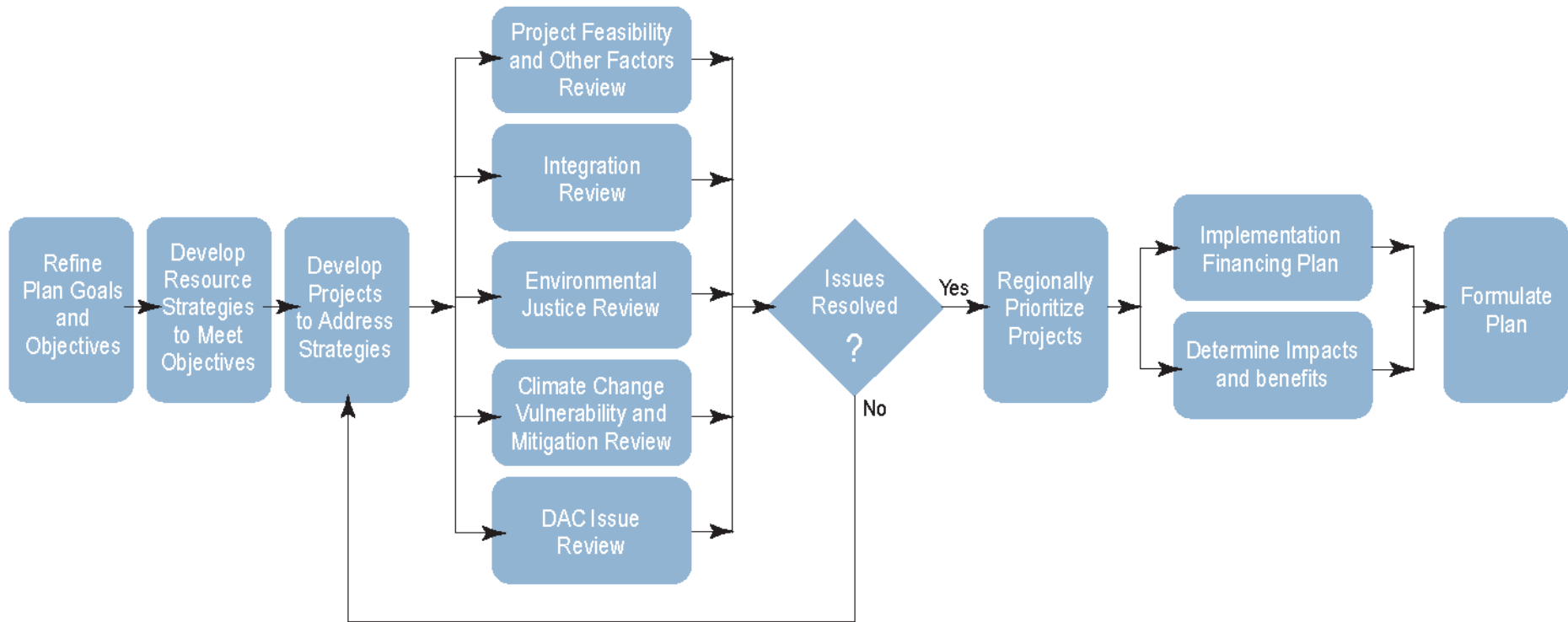
- Initial public meeting
 - Educate the public on the IRWMP process
 - Let them know how to participate
 - Initial look at issues
- Regular, open public stakeholder meetings
 - Coordinated with Gateway Authority meetings
 - Adequate time and attention for public comments
- Public Draft meeting
 - Present Draft report
 - Collect comments



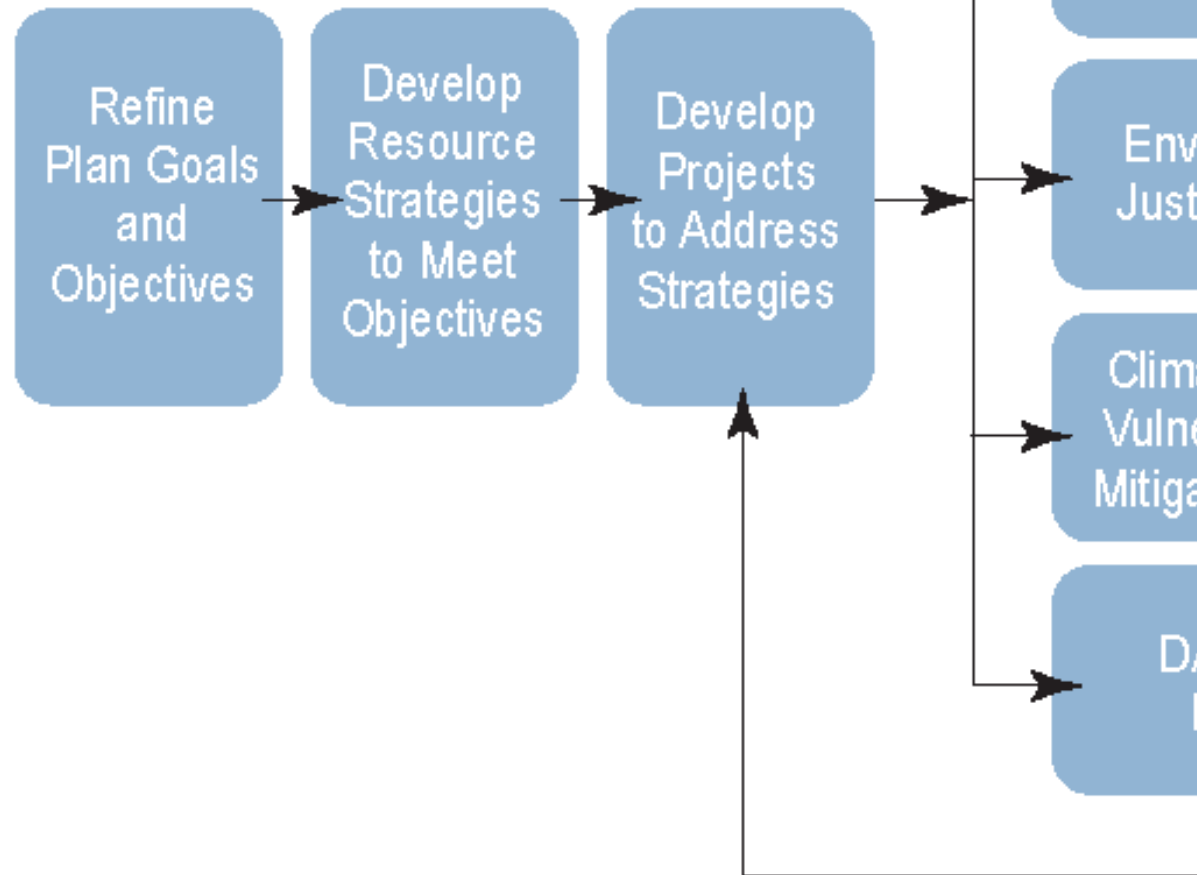
Information and Decision Making



IRWMP Development Process: Plan Formulation



Tasks

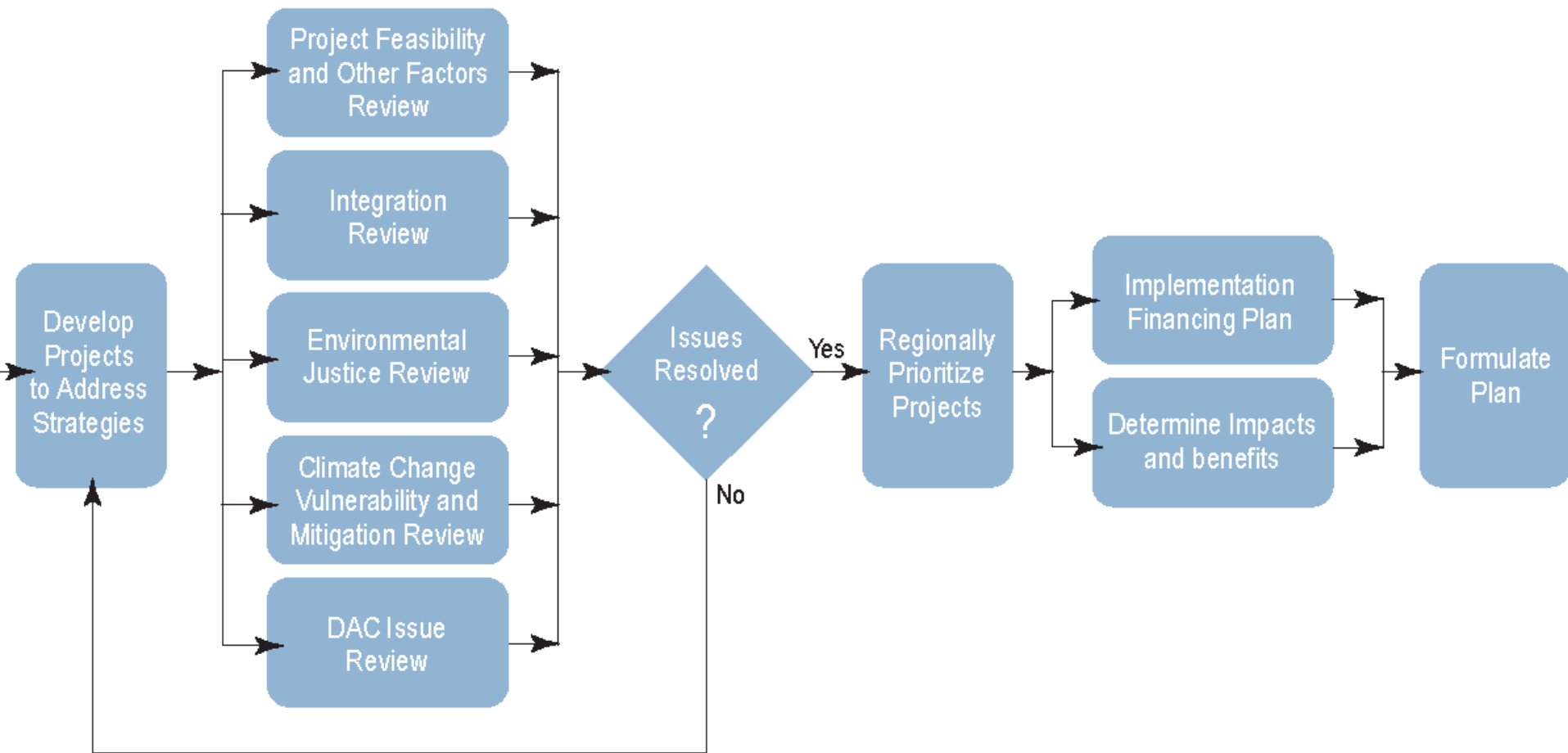




Water Management Strategies:

- Ecosystem restoration
- Environmental and habitat protection and improvement
- Groundwater management
- Storm water capture and management
- Water quality protection and improvement
- Conjunctive use
- Land use planning
- Watershed planning
- Water supply reliability
- Flood management
- Recreation and public access
- Water conservation
- Water recycling
- Imported water
- Storage
- Water and wastewater treatment
- Treatment methodologies
- Water transfers

Tasks





IRWMP Development Process: Other Steps

- Monitoring the plan
 - Process
 - Protocol
 - Metrics to monitor progress
- Data Management



IRWMP Development Process: The Report

- Administrative Draft
- Public Review Draft
- Final IRWMP



When can you comment or get more information??

- Initial Public Meeting
- Monthly Stakeholder Meetings
- Monthly Gateway Authority Meetings
- Public Meeting on Public Review Draft Plan
- *E-mail: GatewayIRWMP@geiconsultants.com*
- Written comments:
 - Gateway Authority
 - 16401 Paramount Blvd
 - Paramount, CA 90723
- Information at: *<http://www.gatewayirwmp.org/>*

Schedule

Month #	Kickoff	1	2	3	4	5	6	7	8	9	10	11	12	13	14	15	16	17	
Mo/Yr	Nov-11	Dec-11	Jan-12	Feb-12	Mar-12	Apr-12	May-12	Jun-12	Jul-12	Aug-12	Sep-12	Oct-12	Nov-12	Dec-12	Jan-13	Feb-13	Mar-13	Apr-13	
Task 1 - Continued Formulation of JPA																			
1.1	Continue Formulation of JPA																		
Task 2 - Public Involvement Process and Meetings																			
2.1	Initial Public Meeting																		
2.2	Develop Stakeholder List and Involvement Plan																		
2.3	Public Meeting on Draft IRWMP																		
2.4	Monthly and Special JPA Meetings																		
Task 3 - Solicit and Hire Consultant																			
3.1	Solicit Consultant to Prepare IRWMP																		
3.2	Select Consultant to Prepare and Complete IRWMP																		
Task 4 - Consultant Prepares Draft IRWMP																			
4.1	Refine and Enhance Planning Objectives for IRWMP																		
4.2	Develop Water Budget																		
4.3	Compile and Analyze Storm Water Runoff Information																		
4.4	Compile Existing Water Quality Information																		
4.5	Develop Integrated Management Strategies for Region																		
4.6	Develop Projects to Address Strategies																		
4.7	Project Feasibility and Other Factors Review																		
4.8	Integration Review																		
4.9	Environmental Justice review																		
4.10	Climate Change Vulnerability and Mitigation Review																		
4.11	DAC Issues Review																		
4.12	Conduct Project Prioritization and Review Process																		
4.13	Develop IRWMP Implementation Component and Financial Plan																		
4.14	Determine Impacts and Benefits																		
4.15	Review Groundwater Monitoring Program																		
4.16	Develop Data Management Methods																		
4.17	Develop Plan Monitoring																		
Task 5 - Draft IRWMP for JPA																			
5.1	Prepare Administrative Draft IRWMP																		
5.2	Review of Administrative Draft by Participating Agencies - JPA																		
5.3	JPA Review and Approval of Administrative Draft IRWMP																		
5.4	Approval by JPA for Public Release of IRWMP																		
Task 6 - Draft IRWMP for Public Review																			
6.1	Prepare Public Draft of IRWMP																		
	Public review period for Draft IRWMP																		
6.2	Review and Incorporate Public Comments into IRWMP																		
Task 7 - Prepare Final IRWMP																			
7.1	Consultant Prepare Final IRWMP																		
7.2	Adoption of IRWMP by Participating Agencies Governing Boards																		
7.3	Final IRWMP submitted to DWR																		
7.4	Prepare hard and soft copies of IRWMP																		
Task 8 - Project Administration and Management																			
8.1	Contract Administration																		
8.2	Project Management																		
8.3	Project Reporting (Progress reports and Final Report)																		



IRWMP Overview Questions?



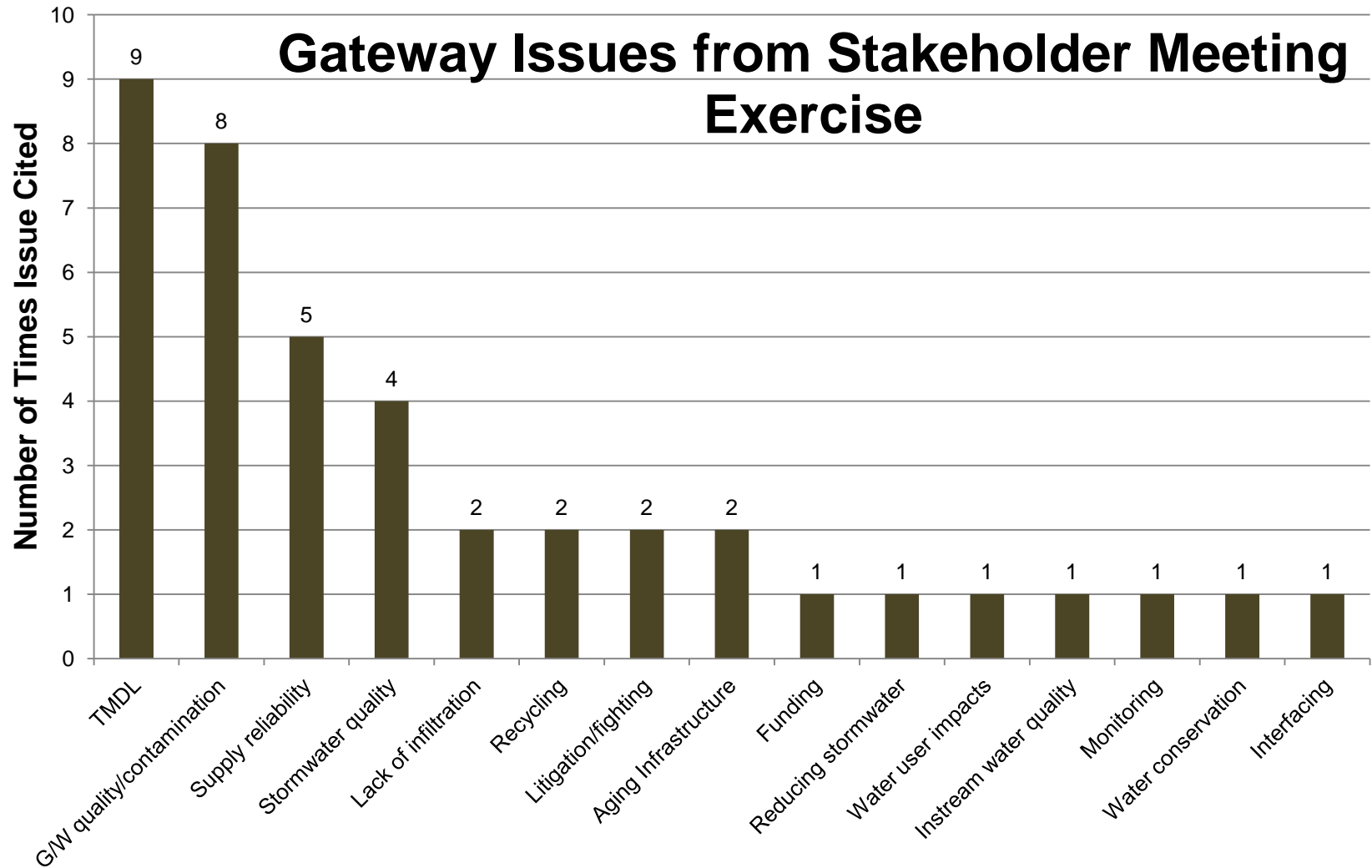
Water Management Issues



Gateway Region IRWM Plan Goals

- Protect and enhance water quality
- Optimize water supply reliability
- Coordinate and integrate water resource management
- Identify and address the water-related and natural resources needs of the Gateway Region Watershed
- Provide stewardship of our natural resources

Issues from Stakeholders





Gateway IRWM Plan Objectives

- Effectively reduce sources of pollutants and environmental stressors
- Reduce the negative effects on waterways and watershed health caused by hydromodification and flooding
- Construct, operate, and maintain habitat and open space
- Optimize open space and water-based recreational opportunities
- Further the scientific and technical foundation of water management
- Effectively obtain, manage, and assess water resources data and information
- Maximize stakeholder and community involvement and stewardship



Gateway Region IRWM Plan Goals and Objectives

Have we covered the important issues?



Stakeholders: Who are we missing?

- **Cities**
- **Water Companies:**
 - Golden State Water Company
 - San Gabriel Water Company
 - California Domestic Water Company
 - Suburban Water System
 - Park Water Company
 - Bellflower-Somerset Mutual Water Company
 - Pico Water District
- **Water Wholesalers:**
 - Metropolitan Water District of Southern California (MWD)
 - Water Replenishment District of Southern California (WRD)*
 - Central Basin Municipal Water District (CBMWD) (on JPA)



Stakeholders: Who are we missing?

- **Environmental advocates:**
 - Amigos de Los Rios
 - Heal the Bay
 - Sierra Club
 - Friends of the Los Angeles River
 - Friends of the San Gabriel River
- **Watershed organizations:**
 - National Water Resources Association
 - Council for Watershed Health *
 - Urban Water Institute
 - Southern California Water Committee
 - Center for Watershed Protection



Stakeholders: Who are we missing?

- **Watershed organizations (cont.):**
 - Southern California Association of Governments [SCAG],
 - Los Angeles County Flood Control District
 - Los Angeles County Sanitation Districts *
 - Santa Fe Springs Community Development Commission
 - Port of Long Beach
 - County of Los Angeles
 - Southern California Edison
 - Industry Council



- **Tribal Organizations:**
 - Gabrieleno/Tongva Tribe

- **State and Federal Stakeholders:**
 - California Department of Water Resources (DWR)
 - Los Angeles Regional Water Quality Control Board (LARWQCB)
 - San Gabriel and Lower Los Angeles Rivers and Mountains Conservancy (RMC)
 - California Department of Fish and Game (DFG)
 - CalTrans
 - U.S. Fish and Wildlife Service (USFWS)
 - U.S. Army Corps of Engineers (USACE)
 - U.S. Bureau of Reclamation (USBR)



Community Outreach Plan Status

- Draft completed by SGA
- Will be presented to Stakeholders March 8th



Data Management

- <http://arcgis02.geiconsultants.com/gateway/>

Data Management

BAM Web Viewer - Windows Internet Explorer

http://arcgis02.geiconsultants.com/sfmpgis1/fy_map.html

File Edit View Favorites Tools Help

Convert Select

Favorites BAM Web Viewer

CA .GOV DEPARTMENT OF WATER RESOURCES

Statewide Floodplain Management Planning (SFMP): Flood Risk Document System

Import Metadata Create Report Import Log Map

SFMP GIS Information System

Zoom In Zoom Out Measure Street View Select Goto county... Data Layer Legend Print Help

Map Satellite Hybrid Terrain

Data Layer

- County Boundary
- Federal Levee Centerline
- Non-Federal Levee Centerline
- River/Stream Centerline
- 100-Year Floodplains
 - FEMA Effective
 - FEMA Preliminary
- 200-Year Floodplains
- 500-Year Floodplains
 - FEMA Effective
 - FEMA Preliminary
- Regional/Special Studies
- USACE Comprehensive Study
- Hydrologic Region

Quick Start

Floodplain Information

County: Los Angeles
 Stream Name:
 Watershed: Los Angeles
 Hydrologic Region: South Coast
 Latitude: 33.90076914145427
 Longitude: -118.15967559814453

Floodplain Layer	100 Year	200 Year	500 Year	Last Updated
FEMA Effective	✓N	N/A	✓X500	Click for Date
FEMA Preliminary	N	N/A	N	Click for Date
DWR Awareness	N	N/A	N/A	Mar 10, 2011
Regional/Special Studies	N	N/A	N	Jan 07, 2008
USACE Comp. Study	N	N	N	Dec 20, 2002

[View Data Layer Definition](#) ✓ Floodplain layer on Y: The location is within the floodplain
 N: The location is not within the floodplain
 N/A: Data not available

Data Layer Definition

Flood Related Links

Disclaimer

Sponsors

POWERED BY Google

Map data ©2011 Google - Terms of Use

Web-Based GIS Enabled Application

Data Management

The screenshot displays the BAM Web Viewer interface within a Windows Internet Explorer browser. The browser's address bar shows the URL: http://arcgis02.geiconsultants.com/sfmpgis1/fy_map.html. The page header features the CA.GOV logo and the text "DEPARTMENT OF WATER RESOURCES". Below this is the title "Statewide Floodplain Management Planning (SFMP): Flood Risk Document System".

The main interface includes a navigation menu with options: "Import Metadata", "Create Report", "Import Log", and "Map". The map area shows a detailed view of Del Norte County, California, with a red pin marking a location in Crescent City. A tooltip window is open over the pin, displaying the following information:

Title	Del Norte County General Plan
Description	Del Norte County General Plan
Lead Agency	Minter & Associates
File name	County General Plan.pdf

The map interface includes a toolbar with "Zoom In", "Zoom Out", "Measure", "Street View", and "Select" buttons. A "Goto county..." dropdown menu is visible. The map style is set to "Map", with options for "Satellite", "Hybrid", and "Terrain". A "Data Layer" panel is open on the right, showing a list of layers with checkboxes:

- County Boundary
- Federal Levee Centerline
- Non-Federal Levee Centerline
- River/Stream Centerline
- 100-Year Floodplains
 - FEMA Effective
 - FEMA Preliminary
 - Regional/Special Studies
 - DWR Awareness
 - USACE Comprehensive Study
- 200-Year Floodplains
- 500-Year Floodplains

A "Legend" panel is also open, showing the "County Boundary" layer and a link to "View Floodplain Definition". The map is powered by Google Maps, as indicated by the logo in the bottom left corner. The bottom right corner shows "Map data ©2011 Google - Terms of Use".

Data Management

BAM Web Viewer - Windows Internet Explorer

http://arcgis02.geiconsultants.com/sfmpgis1/ly_map.html

CA.GOV DEPARTMENT OF WATER RESOURCES

Statewide Floodplain Management Planning (SFMP): Flood Risk Document System

Import Metadata Create Report Import Log Map

Zoom In Zoom Out Measure Street View Select Goto county... Data Layer Legend Print Help

Map Satellite Hybrid Terrain

Data Layer

- County Boundary
- Federal Levee Centerline
- Non-Federal Levee Centerline
- River/Stream Centerline
- 100-Year Floodplains
 - FEMA Effective
 - FEMA Preliminary
 - Regional/Special Studies
 - DWR Awareness
 - USACE Comprehensive Study
- 200-Year Floodplains
- 500-Year Floodplains

Legend

- County Boundary
- 100-Year Floodplains
 - FEMA Effective

[View Floodplain Definition](#)

Title	Del Norte County General Plan
Description	Del Norte County General Plan
Lead Agency	Minter & Associates
File name	County General Plan.pdf

Del Norte

Crescent City

Map data ©2011 Google - Terms of Use

Data Storage

The screenshot displays a web browser window titled "BAM Web Viewer - Windows Internet Explorer" with the URL http://arcgis02.geiconsultants.com/sfmpgis1/fy_map.html. The main content area features the "DEPARTMENT OF WATER RESOURCES" logo and the title "Statewide Floodplain Management Planning (SFMP): Flood Risk". Below the title are navigation tabs: "Import Metadata", "Create Report", "Import Log", and "Map". The "Map" tab is active, showing a Google Maps interface of Crescent City, California. A red pin is placed on the map, and a pop-up window displays the following information:

Title	Del Norte County General Plan
Description	Del Norte County General Plan
Lead Agency	Mintier & Associates
File name	County General Plan.pdf

Overlaid on the map is a second browser window titled "http://arcgis02.geiconsultants.com/sfmpdata/userUpl..." with the URL <http://arcgis02.geiconsultants.com/sfmpdata/userUpl...>. This window displays a document titled "DEL NORTE COUNTY GENERAL PLAN". The document includes the following text:

**DEL NORTE COUNTY
GENERAL PLAN**

PREPARED BY
**MINTIER & ASSOCIATES
JONES & STOKES ASSOCIATES
STEVE LOWENS, P.E.
DEL NORTE COUNTY COMMUNITY DEVELOPMENT DEPARTMENT**

JANUARY 28, 2003

The document viewer also shows the official seal of the County of Del Norte, established in 1857. The map interface includes standard navigation tools like zoom in/out, measure, and street view, along with a scale bar indicating 100 feet.



Calendar/Sharefile/Communications

- Sharefile on-line
- Calendar coming
- Outreach Plan will suggest communications
- E-mail: *GatewayIRWMP@geiconsultants.com*
- Web : *<http://www.gatewayirwmp.org>*



Next Steps

- Finalize Outreach Plan
 - Implement actions
- Data collection:
 - Water Balance for the Region
 - Water Quality information
 - Storm water issues
- Refine data base tool
- Finalize Goals and Objectives
- Invite other stakeholders



Questions?