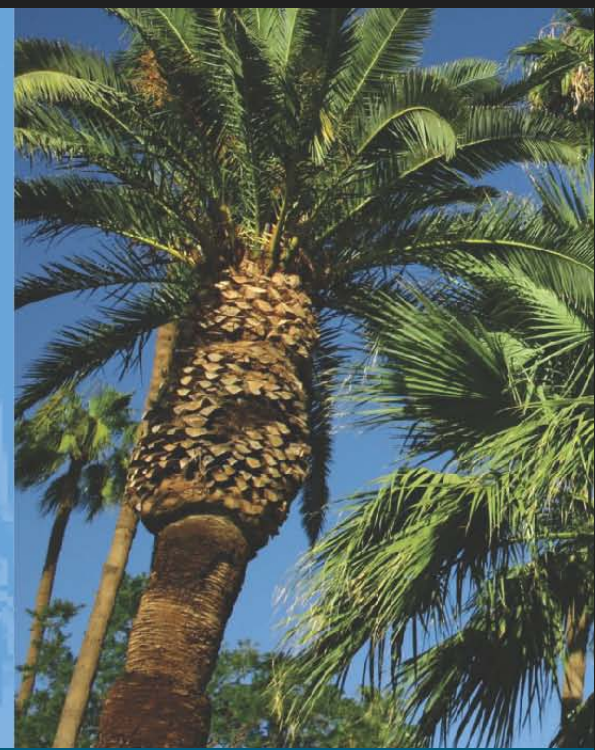


Los Angeles Gateway Region
Integrated Water Management Joint Powers Authority



Development of the Integrated Regional Water Management Plan

May 2012





Stakeholder Meeting Agenda

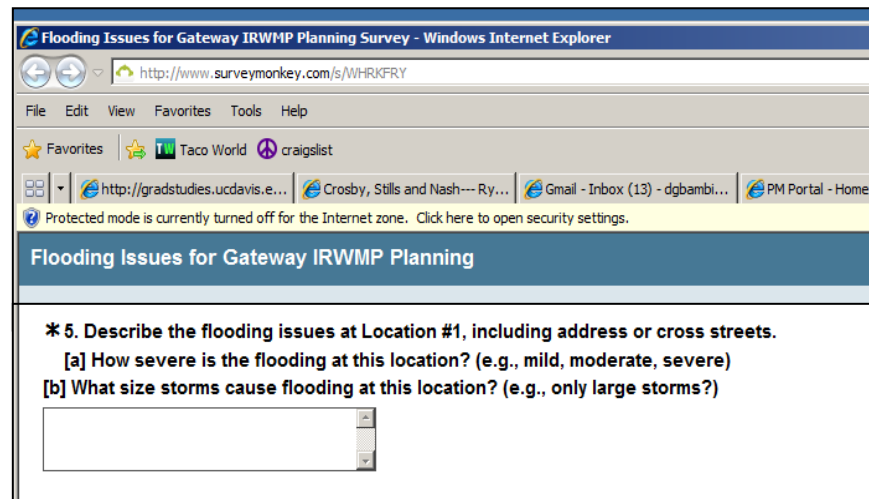
1. Introductions
2. Storm Water Issues
3. IRWMP Goals /Strategies Matrix
4. Project Tool
5. IRWMP Data Base Tool
6. In-kind Accounting Reminder
7. Next Steps
8. Questions

Storm Water Issues: Flooding Analysis

Use of survey for stakeholders:

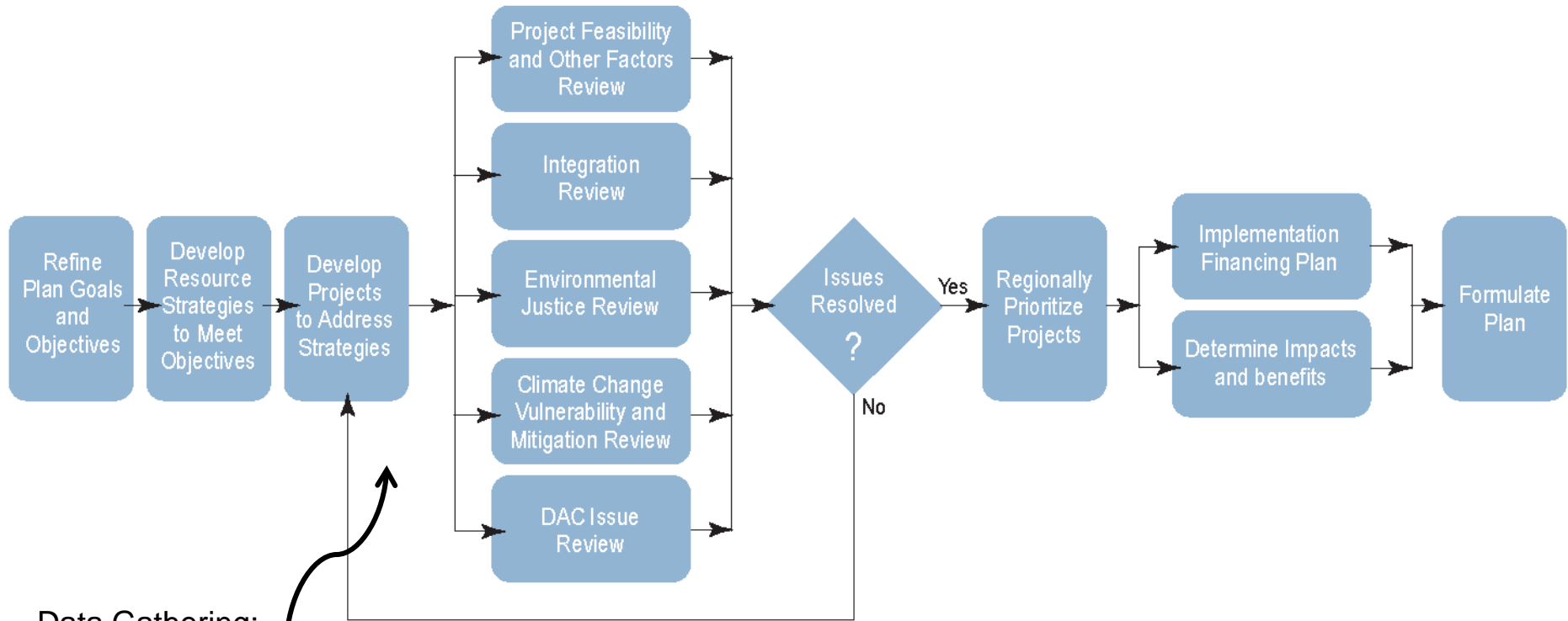
- Survey created for stakeholders to summarize their knowledge of problem areas and issues
- Email sent to stakeholders
- Last Call

<http://www.surveymonkey.com/s/WHRKFRY>



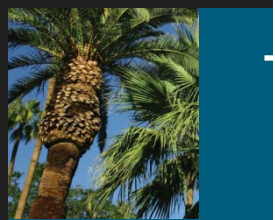
The screenshot shows a web browser window titled "Flooding Issues for Gateway IRWMP Planning Survey - Windows Internet Explorer". The address bar displays "http://www.surveymonkey.com/s/WHRKFRY". The browser's menu bar includes "File", "Edit", "View", "Favorites", "Tools", and "Help". Below the menu bar, there are "Favorites" and "Taco World" icons, and a "craigslist" link. The address bar also shows several open tabs: "http://gradstudies.ucdavis.e...", "Crosby, Stills and Nash--- Ry...", "Gmail - Inbox (13) - dgbambi...", and "PM Portal - Home". A yellow warning bar indicates "Protected mode is currently turned off for the Internet zone. Click here to open security settings." The main content area has a blue header "Flooding Issues for Gateway IRWMP Planning" and a question: "* 5. Describe the flooding issues at Location #1, including address or cross streets." Below the question are two sub-questions: "[a] How severe is the flooding at this location? (e.g., mild, moderate, severe)" and "[b] What size storms cause flooding at this location? (e.g., only large storms?)". A text input field is visible below the sub-questions.

IRWMP Development Process:

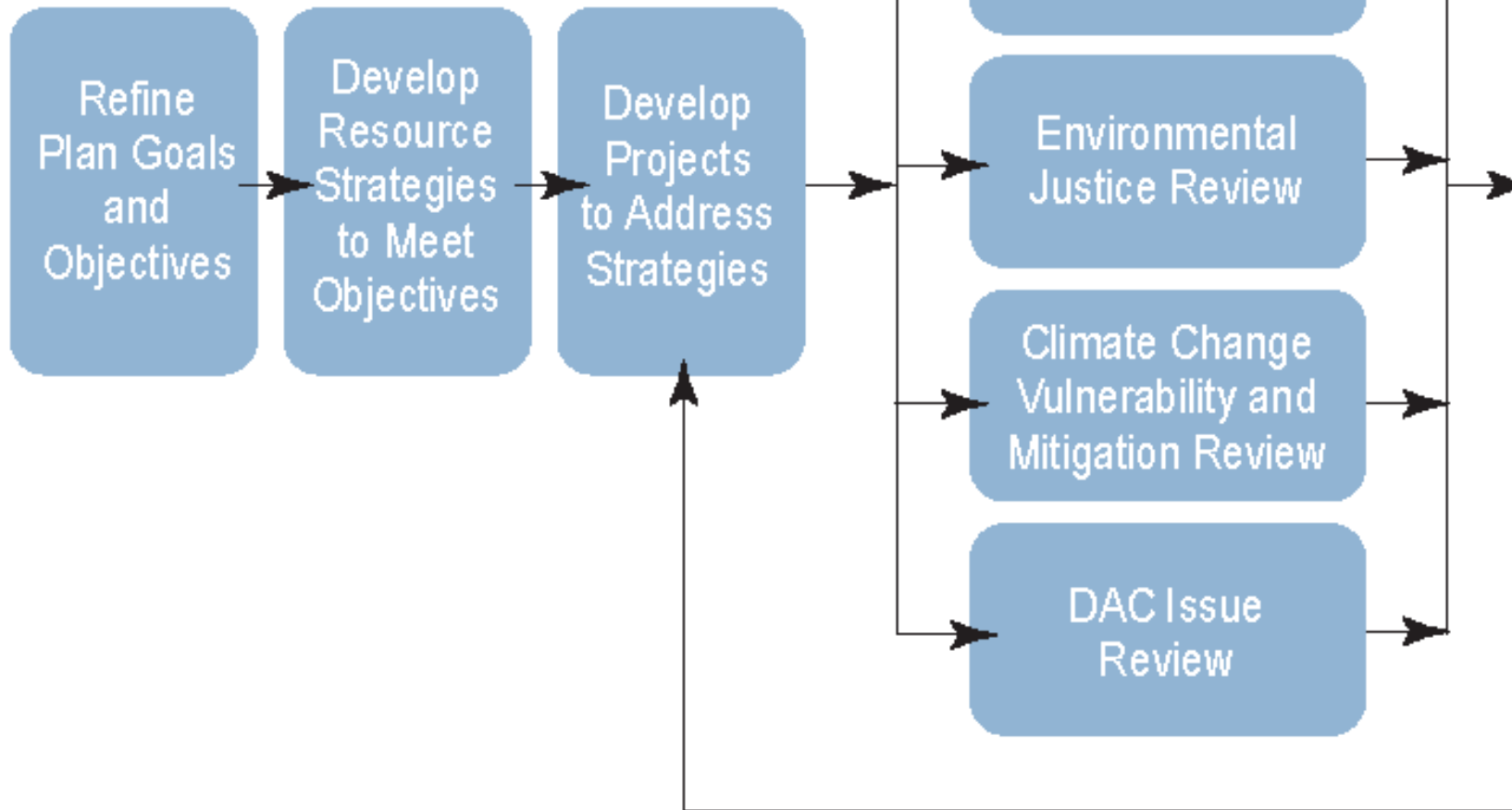


Data Gathering:

Water balance
Storm water Issues
Water quality data
Review groundwater
monitoring



Water Management Issues.....





Water Management Strategies:

- Ecosystem restoration
- Environmental and habitat protection and improvement
- Groundwater management
- Storm water capture and management
- Water quality protection and improvement
- Conjunctive use
- Land use planning
- Watershed planning
- Economic Incentives (Grants, Loans, Pricing)
- Conveyance
- Water supply reliability
- Flood management
- Recreation and public access
- Water conservation
- Water recycling
- Imported water
- Storage
- Water and wastewater treatment
- Treatment methodologies
- Water transfers
- Desalination
- Recharge area protection
- System re-operation



Gateway Region IRWM Plan Goals and Objectives:

- Identify and address the water dependent natural resources needs of the Gateway Region Watersheds.
- Protect and enhance water quality.
 - *Objective:* Attain required TMDL levels in accordance with their individual schedules.
 - *Objective:* Effectively reduce major sources of pollutants and environmental stressors in the region.
- Optimize and ensure water supply reliability.
 - *Objective:* Continue and enhance water use efficiency measures to meet 20X2020 per capita water use targets.
 - *Objective:* Expand regional water recycling facilities and recycled water distribution to help provide reliable water sources.
 - *Objective:* Systematically upgrade aging water infrastructure in the Region.
- Coordinate and integrate water resource management.



Gateway Region IRWM Plan Goals and Objectives:

- Provide stewardship of the Region's water dependent natural resources through enhancement of amenities and infrastructure.
 - *Objective:* Create habitat, open space, and water-based recreational opportunities in the Region
- Manage flood and storm waters to reduce flood risk and water quality impacts.
 - *Objective:* Install or optimize water monitoring to effectively manage storm water in the Region. Obtain, manage, and assess water resources data and information.



Goals of the IRWMP

Water Management Strategy

	Identify and address the water dependent natural resources needs of the Gateway Region Watersheds.	Protect and enhance water quality	Optimize and ensure water supply reliability	Coordinate and integrate water resource management	Provide stewardship of the Region's water dependent natural resources through enhancement of amenities and infrastructure	Manage flood and storm waters to reduce flood risk and water quality impacts	
Flood management		X				X	2
Conjunctive use			X	X			2
Conveyance			X			X	2
Desalination		X	X				2
Economic Incentives (Grants, Loans, Pricing)			X				1
Ecosystem restoration	X	X			X		3
Environmental and habitat protection & Imp	X				X		2
Groundwater management		X	X	X			3
Imported water			X				1
Land use planning	X		X	X	X	X	5
Recharge area protection	X	X			X		3
Recreation and public access					X		1
Storage			X				1
Storm water capture and management		X	X			X	3
System re-operation						X	1
Treatment methodologies		X					1
Water and wastewater treatment			X				1
Water conservation	X		X				2
Water quality protection and improvement		X	X				2
Water recycling			X	X			2
Water supply reliability			X				1
Water transfers			X				1
Watershed planning	X	X	X	X		X	5
	6	9	16	5	5	6	
	X - suggested by Stakeholder Exercise						
	X - Added by Bill						



IRWMP Goals and Statewide Priorities

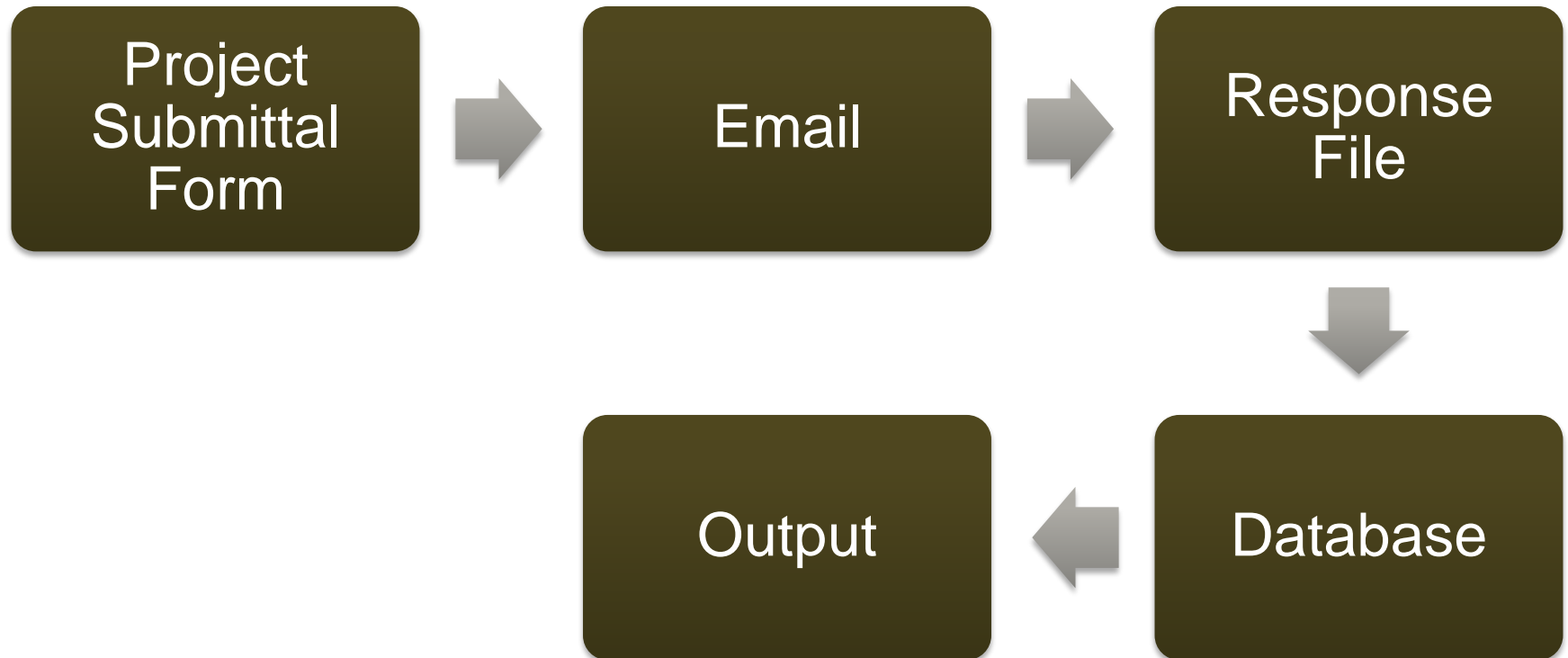
California Statewide Priorities

		Reduce conflicts/Resolve Water Rights Disputes	Implement TMDL	Implement Watershed Management Initiatives	Implement NPS Plan	Assist in meeting Delta Water Quality Objectives	Implement Various State Plans	Address EJ Concerns	Assist in Achieving CALFED Goals
Gateway IRWMP Goals	Identify and address the water dependent natural resources needs of the Gateway Region Watersheds.		✓			✓	✓		
	Protect and enhance water quality		✓		✓				
	Optimize and ensure water supply reliability	✓				✓		✓	
	Coordinate and integrate water resource management	✓					✓		
	Provide stewardship of the Region's water dependent natural resources through enhancement of amenities and infrastructure			✓			✓	✓	
	Manage flood and storm waters to reduce flood risk and water quality impacts		✓	✓	✓			✓	



Project Submittal and Review Process

Process Overview





Project Submittal Form

- What it is:
 - An Adobe fill-in form containing project information that is submitted via email
- What it does:
 - Provides the opportunity for project submitters to describe a project and its attributes
 - Ultimately provides an efficient way to view project information in different ways



Project Database

- What it is:
 - A pairing of Excel and Access files containing all data from a Project Submittal Form
- What it does:
 - Allows extraction of data provided on a project for a an efficient review process
 - Provides a variety of easy-to-use tabular formats
 - Provides output of all text in formatted form and some tabular formats



Reviewer Worksheet

- What it is:
 - A form to systematically compare and grade projects against Regional and Statewide IRWM Goals using weighted criteria developed by the Stakeholders
- What it does:
 - Provides formatted scoring sheet for a project reviewer to score a project and provide commentary on the project.

Water Balance



Data Base Tool

<http://arcgis02.geiconsultants.com/gateway2/gis/?w=orgLayer>

Gateway Interactive Map Viewer - Windows Internet Explorer

http://arcgis02.geiconsultants.com/gateway/

File Edit View Favorites Tools Help

Gateway Interactive Map Viewer

Los Angeles Gateway Region Integrated Regional Water Management Joint Powers Authority
Integrated Regional Water Management Plan

Gateway Cities

Information Select Query Graphics Tools Base Map Layer Legend Print Save Refresh Share

Layer

- Layer
- CA Freeway
- Gateway
 - IncorporatedCities
 - IRWM
 - CBMWD
 - Long Beach Water District
 - Groundwater Basin
 - calwater_UTM_83
 - Disadvantaged Community*
 - Tracts
 - IRWM Project Boundary
 - Zip Code Area
- CLD Data
- Watershed
- Base Data
 - CDEC Stations
 - USGS CA Stations

Right click on the layer name to have more options.
Click on the layer to set it active.
Click the layer name, hold and drag to order the layers

Current Tool: Identify Active Layer: Lat/Long:33.8244494694211, -117.893449020386

Data Base Tool

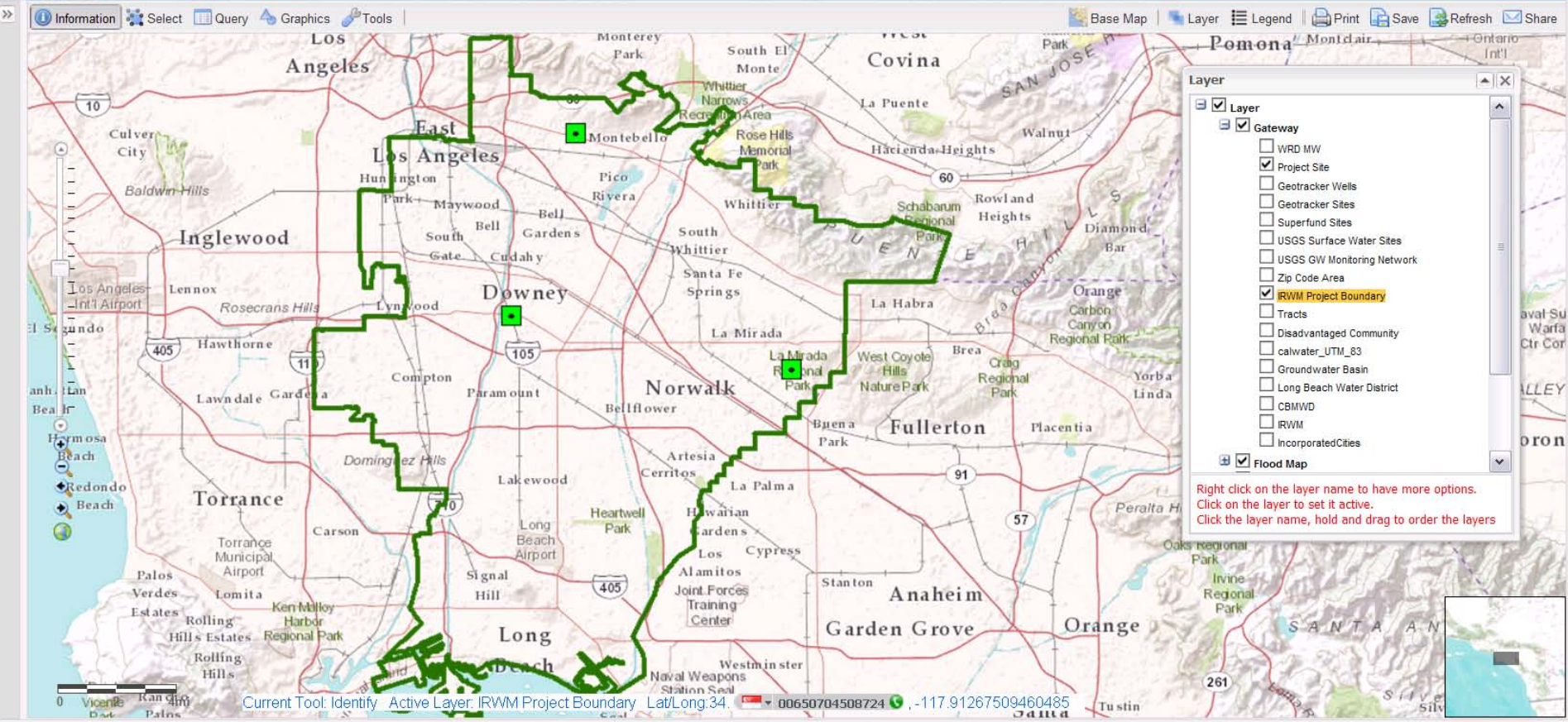
Gateway Interactive Map Viewer - Windows Internet Explorer

http://arcgis02.geiconsultants.com/gateway2/gis/?w=orgLayer

File Edit View Favorites Tools Help

Favorites Gateway Interactive Map Viewer

Los Angeles Gateway Region Integrated Regional Water Management Joint Powers Authority Integrated Regional Water Management Plan



Data Base Tool

Gateway Interactive Map Viewer - Windows Internet Explorer

http://arcgis02.geiconsultants.com/gateway2/gis/?w=orgLayer

File Edit View Favorites Tools Help

Los Angeles Gateway Region Integrated Regional Water Management Joint Powers Authority
Integrated Regional Water Management Plan

Information Select Query Graphics Tools Base Map Layer Legend Print Save Refresh Share

Extent Free Polygon Point In Feature Line Free Line Polyline Polygon Arrow Triangle Circle Ellipse Clear Select Add Buffer Close

The map displays the Los Angeles Gateway Region with various cities and areas highlighted. The IRWM Project Boundary is shown as a thick black line. Project sites are marked with blue squares. The map includes major roads like I-10, I-405, I-110, and I-105.

Layer

- Layer
 - Gateway
 - WRD MW
 - Project Site
 - Geotracker Wells
 - Geotracker Sites
 - Superfund Sites
 - USGS Surface Water Sites
 - USGS GW Monitoring Network
 - Zip Code Area
 - IRWM Project Boundary
 - Tracts
 - Disadvantaged Community
 - calwater_UTM_83
 - Groundwater Basin
 - Long Beach Water District
 - CBMWD
 - IRWM
 - Incorporated Cities
 - Flood Map

Right click on the layer name to have more options.
Click on the layer to set it active.
Click the layer name, hold and drag to order the layers

Results

Project Site IRWM Project Boundary

3 features returned in Project Site [Export CSV](#) [Export XML](#) [Export KML](#)

FID	OBJECTID	ID	TODAY DATE	PROJ TITLE	AGENCIES L	AGENCY ORG	CONTACT PE	CONTACT TI	EMAIL ADDR	ADDRESS	PHONE NO	XCOORD
0	1	1	41031	Roaring R	12:00:00	GEI Const	Bill Benn	Principal	bbennett@	2868 Pros	916-631-4	-118.86
1	2	2	41031	KAST Dete	12:00:00	GEI Const	Bill Benn	Principal	bbennett@	2868 Pros	916-631-4	-118.26
2	3	3	41031	Bill's De	12:00:00	GEI Const	Bill Benn	Principal	bbennett@	2868 Pros	916-631-4	-118.26

Data Base Tool

Gateway Interactive Map Viewer - Windows Internet Explorer

http://arcgis02.geiconsultants.com/gateway/

File Edit View Favorites Tools Help

Gateway Interactive Map Viewer

Los Angeles Gateway Region Integrated Regional Water Management Joint Powers Authority
Integrated Regional Water Management Plan

Information Select Query Graphics Tools Base Map Layer Legend Print Save Refresh Share

Extent Free Polygon Point In Feature >>

Base Map Gallery

- Imagery
- Imagery with Labels
- Streets
- Topographic
- Terrain with Labels
- Light Gray Canvas
- National Geographic
- Oceans
- OpenStreetMap

Current Tool: Select Active Layer: Lat/Long:33.8864432690704, -118.159899663923

Data Base Tool

The screenshot displays the Gateway Interactive Map Viewer interface within a Windows Internet Explorer browser. The browser's address bar shows the URL <http://arcgis02.geiconsultants.com/gateway/>. The page title is "Los Angeles Gateway Region Integrated Regional Water Management Joint Powers Authority Integrated Regional Water Management Plan".

The main map area shows an aerial view of a residential and commercial area in Los Angeles. A green polygon is drawn over the map, with vertices labeled with coordinates: 11087100, 11087195, and 11102250. A toolbar at the top of the map area includes "Extent", "Free Polygon", "Point", and "In Feature" buttons. A "Base Map Gallery" panel is visible on the right side of the map.

A context menu is open over the map, listing the following options:

- Prev Extent
- Next Extent
- Zoom to Full
- Switch Map Navigation
- Go to XY
- Get Lat/Long
- Measure Distance
- Surface Profile Line
- Surface Profile Polyline
- Bookmark This Map
- Help
- Hide Layer Window
- Show Legend

The "Layer" panel on the right side of the map is expanded, showing the following layers and their status:

- Layer
 - CA Freeway
 - Gateway
 - IncorporatedCities
 - IRWM
 - CBMWD
 - Long Beach Water District
 - Groundwater Basin
 - calwater_UTM_83
 - Disadvantaged Community*
 - Tracts
 - IRWM Project Boundary
 - Zip Code Area
 - CLD Data
 - Watershed
 - Watersheds
 - Major Canals and Aqueducts
 - Minor Rivers
 - River Centerline
 - Base Data

Below the layer list, there is a red text instruction: "Right click on the layer name to have more options. Click on the layer to set it active. Click the layer name, hold and drag to order the layers".

At the bottom of the map area, a status bar displays: "Current Tool: Select Active Layer: Lat/Long:34.0129104318112, -118.065110397337".

Data Base Tool

Gateway Interactive Map Viewer - Windows Internet Explorer

http://arcgis02.geiconsultants.com/gateway/

Los Angeles Gateway Region Integrated Regional Water Management Joint Powers Authority
Integrated Regional Water Management Plan

Information Select Query Graphics Tools Base Map Layer Legend Print Save Refresh Share

Extent Free Polygon Point In Feature >>

Base Map Gallery Layer

- Layer
 - CA Freeway
 - Gateway
 - Incorporated Cities
 - IRWM
 - CBMW D
 - Long Beach Water District
 - Groundwater Basin
 - calwater_UTM_83
 - Disadvantaged Community*
 - Tracts
 - IRWM Project Boundary
 - Zip Code Area
 - CLD Data

Results

IRWM Project Boundary USGS CA Stations

ations Export CSV Export XML Export KML

ITE NO	STATION NM	LAT VA	LONG VA	COORD ACY	COORD DATU	DEC LAT VA	DEC LONG V	CO A
1087500	SAN GABRIEL R A PICO CA	340047	1180348	F	NAD27	34.01306761	-118.06423439	F
1102250	MISSION C BL WHITTIER NARROWS DAM CA	340115	1180415	F	NAD27	34.02084515	-118.0717347	F

Current Tool: Select Active Layer: Lat/Long:34.0091040328744, -118.071032714842

Data Base Tool

Gateway Interactive Map Viewer - Windows Internet Explorer

http://arcgis02.geiconsultants.com/gateway2/gis/?w=orgLayer

File Edit View Favorites Tools Help

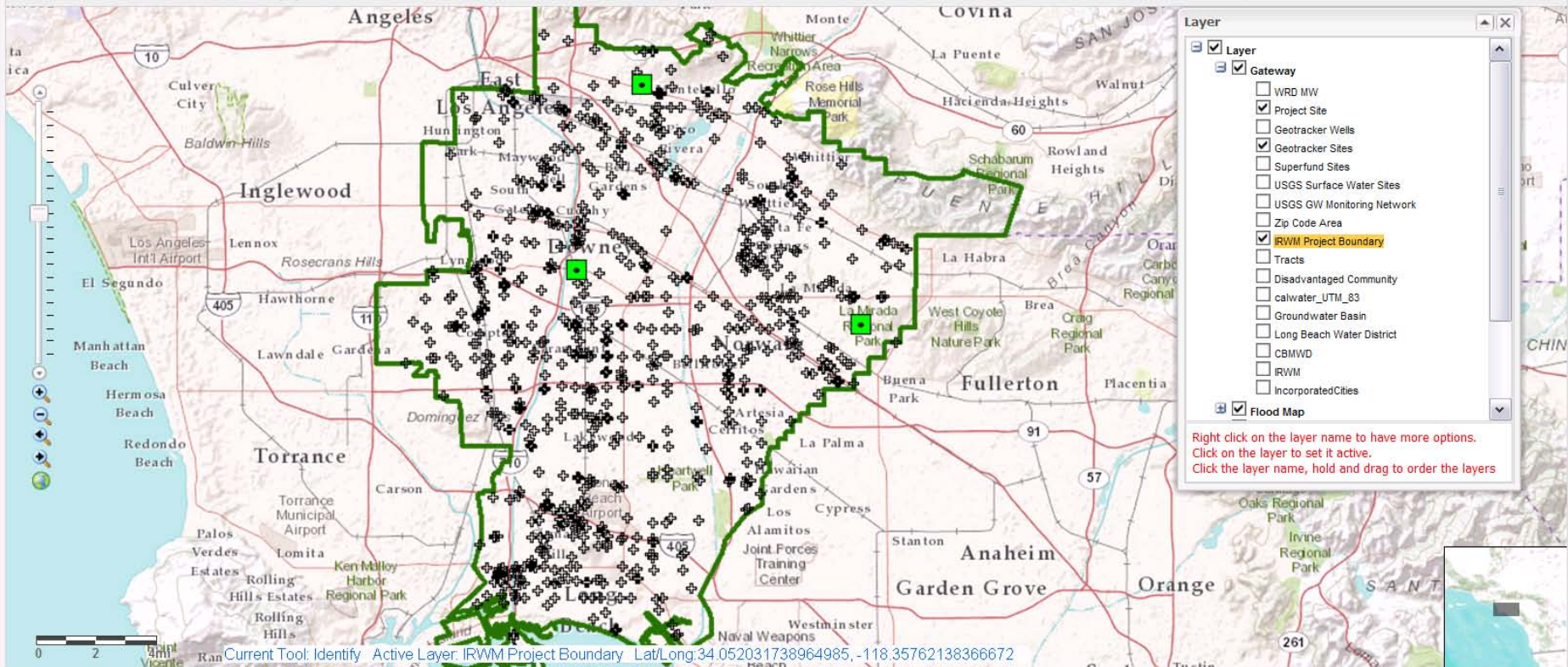
Favorites Gateway Interactive Map Viewer

Los Angeles Gateway Region Integrated Regional Water Management Joint Powers Authority Integrated Regional Water Management Plan

Information Gateway Cities Query Graphics Tools

Base Map Layer Legend Print Save Refresh Share

Extent Free Polygon Point In Feature Line Free Line Polyline Polygon Arrow Triangle Circle Ellipse Clear Select Add Buffer Close



Layer

- Layer
 - Gateway
 - WRD MW
 - Project Site
 - Geotracker Wells
 - Geotracker Sites
 - Superfund Sites
 - USGS Surface Water Sites
 - USGS GW Monitoring Network
 - Zip Code Area
 - IRWM Project Boundary
 - Tracts
 - Disadvantaged Community
 - calwater_UTM_83
 - Groundwater Basin
 - Long Beach Water District
 - CBMWD
 - IRWM
 - Incorporated Cities
 - Flood Map

Right click on the layer name to have more options.
Click on the layer to set it active.
Click the layer name, hold and drag to order the layers

Data Base Tool

Gateway Interactive Map Viewer - Windows Internet Explorer

http://arcgis02.geiconsultants.com/gateway/

File Edit View Favorites Tools Help

Gateway Interactive Map Viewer

Los Angeles Gateway Region Integrated Regional Water Management Joint Powers Authority
Integrated Regional Water Management Plan

Information Select Query Graphics Tools Base Map Layer Legend Print Save Refresh Share

Extent Free Polygon Point In Feature >>

Base Map Gallery Layer

- Layer
 - CA Freeway
 - Gateway
 - Incorporated Cities
 - IRWM
 - CBMWD
 - Long Beach Water District
 - Groundwater Basin
 - calwater_UTM_83
 - Disadvantaged Community*
 - Tracts
 - IRWM Project Boundary
 - Zip Code Area
 - CLD Data
 - Watershed
 - Watersheds
 - Major Canals and Aqueducts
 - Minor Rivers
 - River Centerline
 - Base Data
 - ...

Right click on the layer name to have more options.
Click on the layer to set it active.
Click the layer name, hold and drag to order the layers

VERNON

PICO RIVERA

WHITTIER

SOUTH GATE

DOWNEY

SANTA FE SPRINGS

Central Basin Municipal W.D.

11101180

11360

11101500

110870

1110200

11087100

11101300

11102200

11097500

11096500

11102500

0 1 2mi

Current Tool: Select Active Layer: Lat/Long:34.0534895489315, -118.278871726988

Los Angeles

Data Base Tool

BAM Web Viewer - Windows Internet Explorer

http://arcgis02.geiconsultants.com/sfmpgis1/y_map.html

DEPARTMENT OF WATER RESOURCES

Statewide Floodplain Management Planning (SFMP): Flood Risk Document System

Import Metadata Create Report Import Log Map

Zoom In Zoom Out Measure Street View Select Goto county... Data Layer Legend Print Help

Map Satellite Hybrid Terrain

Title	Del Norte County General Plan
Description	Del Norte County General Plan
Lead Agency	Mintier & Associates
File name	County General Plan.pdf


http://arcgis02.geiconsultants.com/sfmpdata/userUpl...

http://arcgis02.gei... Google

http://arcgis02.geiconsultants.com/sfmpdata...

1 / 194 57.6%

Find



**DEL NORTE COUNTY
GENERAL PLAN**

PREPARED BY

**MINTIER & ASSOCIATES
JONES & STOKES ASSOCIATES
STEVE LOWENS, P.E.
DEL NORTE COUNTY COMMUNITY DEVELOPMENT DEPARTMENT**

JANUARY 28, 2003

POWERED BY Google 200 ft 50 m



In-kind Work Accounting

GWMA In-Kind Expense Rate Certification

Date: _____

Name: _____

Title: _____

Organization: _____

Address: _____

Phone: _____

Email: _____

I hereby certify that I am a paid employee of _____
 actively represent that organization in the Gateway IRWMP pro
 participation for that organization would constitute In-Kind expe
 development.

My hourly charge rate for that organization, including related o

My electronic signature is _____

Signature: _____ Date: _____

Gateway IRWMP In-Kind Timesheet

Name: _____

Organization: _____

Period: _____

Date mm/dd/yy	Hours*	Task	Description of Work**
TOTAL IN-KIND HOURS	0		

*nearest 1/2 hour
 **if meeting, give purpose
 I certify this accounting as true and correct,

Signature _____

Note: Electronic signature must be on file



In-Kind Accounting

- Fill out the “GWMA In-Kind Expense Rate Certification” form.
- Provide a copy of your pay stub or other evidence that authenticates your hourly pay rate that you provided in the rate certification form above. This too only needs to be done once. Please block out and obscure any social security numbers, etc. not needed to verify your pay rate.
- Fill out the “Gateway IRWMP In-kind Timesheet” Task numbers and corresponding descriptions of those tasks are provided with the timesheet. Timesheets can be submitted monthly but not less than once every quarter
- Send all three items above to Bill:
 - Scanning and e-mailing them to GatewayIRWMP@geiconsultants.com
 - Mailing them to GEI Consultants, Inc., 2868 Prospect Park Drive, Suite 400, Rancho Cordova, CA 95670
 - Or bringing them to any Stakeholder Meeting.

Next Steps

- Continue with data collection:
 - Water Balance
 - Water Quality/Groundwater
 - Storm water issues – (please respond to survey by 5/16)
- Report on issues
- Collect and Develop Projects and Project Concepts
- Develop/revise criteria for ranking

- **Next Stakeholders Meeting June 14**



The Gateway IRWMP Region

