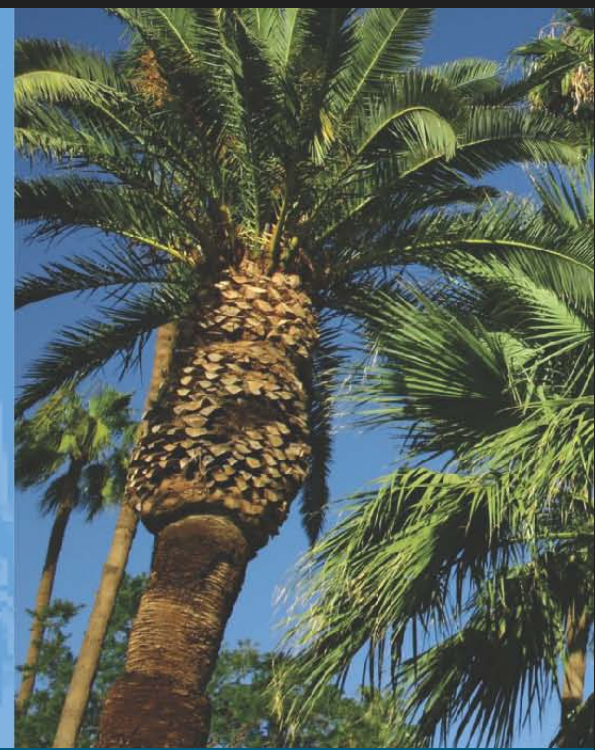


Los Angeles Gateway Region
Integrated Water Management Joint Powers Authority



Development of the Integrated Regional Water Management Plan

August 2012

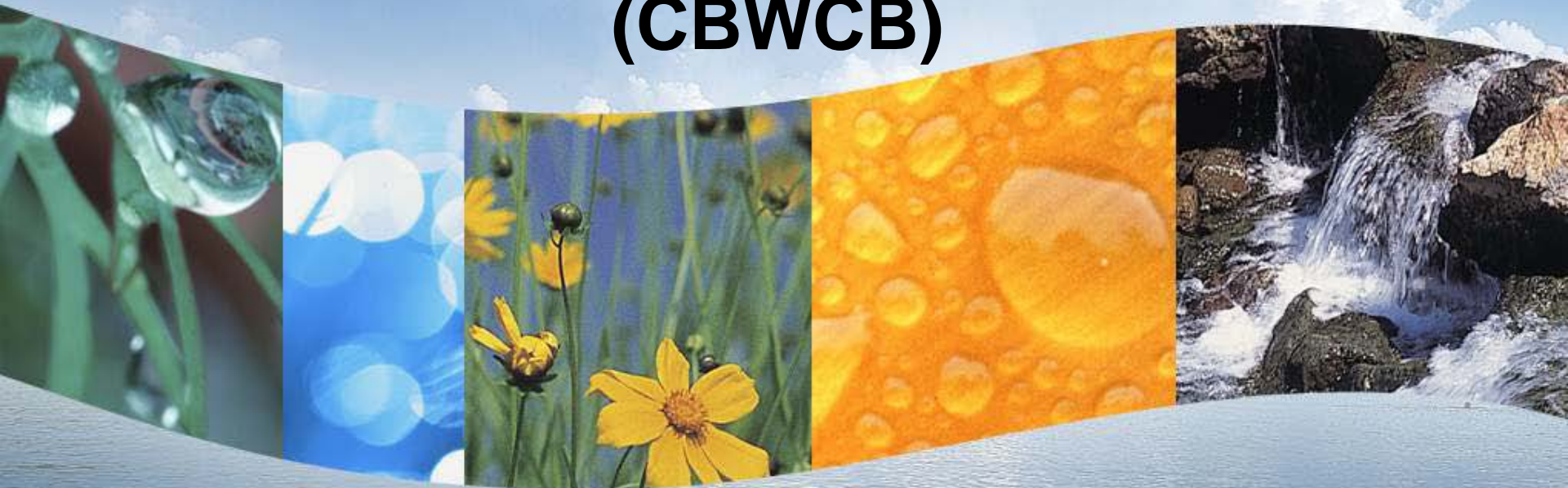




Stakeholder Meeting Agenda

1. Introductions
2. Central Basin and West Basin Salt Nutrient Management Plan – (Phuong Ly, WRD)
3. Technical Documents
4. Project Submittals
5. DAC Issues Review
6. Environmental Justice Review
7. Integration with Neighbors
8. In-kind Accounting Reminder
9. Next Steps
10. Questions

Salt/Nutrient Management Plan (SNMP) for the Central Basin & West Coast Basin (CBWCB)



August 9, 2012

**Los Angeles Gateway Region Integrated Regional Water
Management Plan
Stakeholder Meeting**

SWRCB Recycled Water Policy

State Water Resources Control Board (SWRCB) established Recycled Water Policy on May 14, 2009



- Purpose: *“...to establish uniform requirements for recycled water use and to develop sustainable water supplies throughout the State”*
- Requires Salt/Nutrient Management Plans (SNMPs) for all groundwater basins by May 14, 2014
- Stakeholders prepare the SNMPs
- RWQCBs approve the SNMPs and adopt as a Basin Plan Amendment



Objective of the SNMP

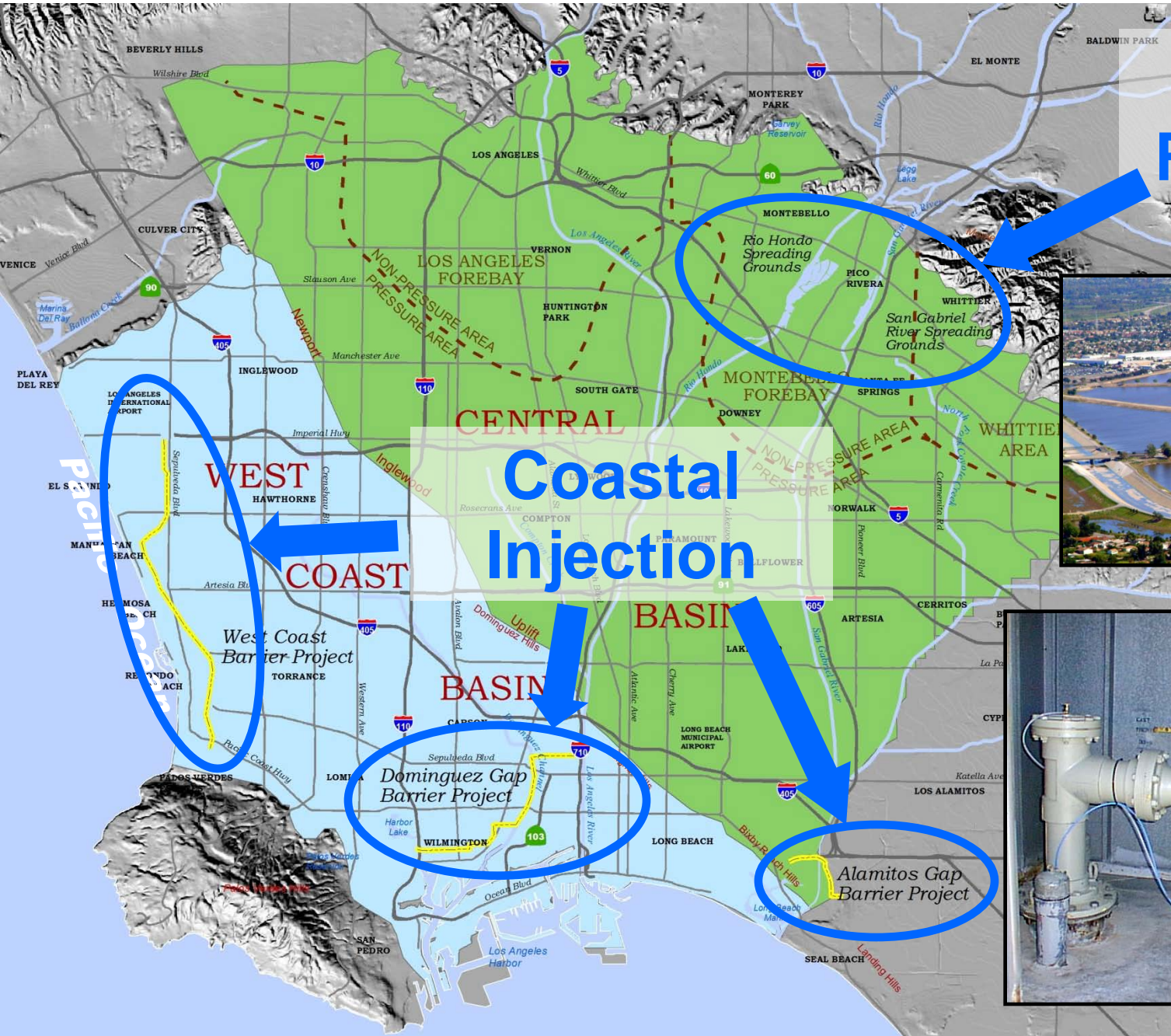
Manage salts and nutrients from all sources “. . . on a basin-wide or watershed-wide basis in a manner that ensures attainment of water quality objectives and protection of beneficial uses.”

Key Elements in SNMP

- Groundwater basin hydrogeology & water quality
- Recycled water and stormwater use/recharge goals & objectives
- Estimate current and future salt and nutrient loading (2025)
- Calculate assimilative capacity & perform antidegradation analysis
- All basin monitoring programs, including constituents of emerging concern (CECs)
- Implementation plan/project(s) to manage salt/nutrient loading
- CEQA analysis

SNMP Study Area

Surface
Recharge



Current SNMP Stakeholders

City of Los Angeles, Department of Water & Power (LADWP)
Los Angeles County Department of Public Works (LACDPW)
Los Angeles County Sanitation District (SDLAC)
Metropolitan Water District of Southern California (MWD)
West Basin Municipal Water District (WBMWD)
Water Replenishment District of Southern California (WRD)
Los Angeles Regional Water Quality Control Board (LARWQCB)
California Department of Public Health (CDPH)
California Department of Water Resources (DWR)
Central Basin Municipal Water District (CBMWD)
Central Basin Water Association (CBWA)
City of Compton
City of Inglewood
City of Long Beach
City of Los Angeles, Bureau of Sanitation (LABOS)
City of Manhattan Beach
City of Torrance
Council for Watershed Health (CWH)
Golden State Water Company (GSWC)
Heal the Bay
West Basin Water Association (WBWA)







SNMP Stakeholder Efforts to Date

- 2009 – 2010: Researched SNMP guidelines and attended numerous workshops
- 2010 – 2011: Prepared SNMP Workplan
- December 2011: Received LARWQCB approval of SNMP Workplan
- May 2012: Retained technical consultant (Todd Engineers) to assist in preparation of SNMP
- June 18, 2012: Held first stakeholder workshop with consultant team to begin preparing SNMP (see meeting schedule on website)

LARWQCB-Approved SNMP Workplan

- **October 2011**: Submitted Final Revised Workplan of the SNMP to LARWQCB staff for approval
- **December 2011**: Received approval letter from LARWQCB on the Final Revised Workplan of the SNMP



FINAL REVISED WORKPLAN Salt/Nutrient Management Plan

Central Basin and West Coast Basin
Southern Los Angeles County, California

October 24, 2011

SNMP Project Website

www.wrd.saltnutrient.com

Salt & Nutrient Management Plan for the Central Basin and West Coast Basin

[Home](#)

[Documents & References](#)

[Contact Us](#)

[Participation](#)

Links to Local Agencies and Stakeholders

[Los Angeles Dept. of Water & Power](#)

[County of Los Angeles Dept. of Public Works, Los Angeles County Flood Control District](#)

[Metropolitan Water District of Southern California](#)

[Sanitation Districts of Los Angeles County](#)

[Water Replenishment District of Southern California](#)

[West Basin Municipal Water District](#)

[California Regional Water Quality Control Board, Los Angeles Region](#)

In February 2009, the State Water Resources Control Board (SWRCB) adopted [Resolution No. 2009-0011](#), which established a statewide Recycled Water Policy. This policy encourages increased use of recycled water and local stormwater. It also requires local water and wastewater entities, together with local salt/nutrient contributing stakeholders to develop a *Salt and Nutrient Management Plan (SNMP)* for each groundwater basin in California. A [SNMP Work Plan](#) was jointly prepared by the Central Basin and West Coast Basin Stakeholders and approved by the Los Angeles Regional Water Quality Control Board (LARWQCB) in December 2011.

The objective of the SNMP is to manage salts and nutrients from all sources *"... on a basin-wide or watershed-wide basis in a manner that ensures attainment of water quality objectives and protection of beneficial uses."* The SNMP will eventually be adopted by the LARWQCB as a Basin Plan Amendment. The SNMP will include the following:

- ▶ Stormwater and Recycled Water Use/Recharge Goals and Objectives
- ▶ Characterization of Hydrogeologic Conceptual Model/Water Quality



Current and Future SNMP Tasks

- **Current** – Compiling & evaluating data and coordinating with ongoing regional planning efforts
- **Mid-2013** – Finalize Draft SNMP and submit to LARWQCB for review and comments
- **May 2014** – Approval of Final SNMP by LARWQCB



SNMP Contact Information

Project E-Mail:

WRD Contact: Phuong Ly
 562-275-4246

LARWQCB SNMP Website:



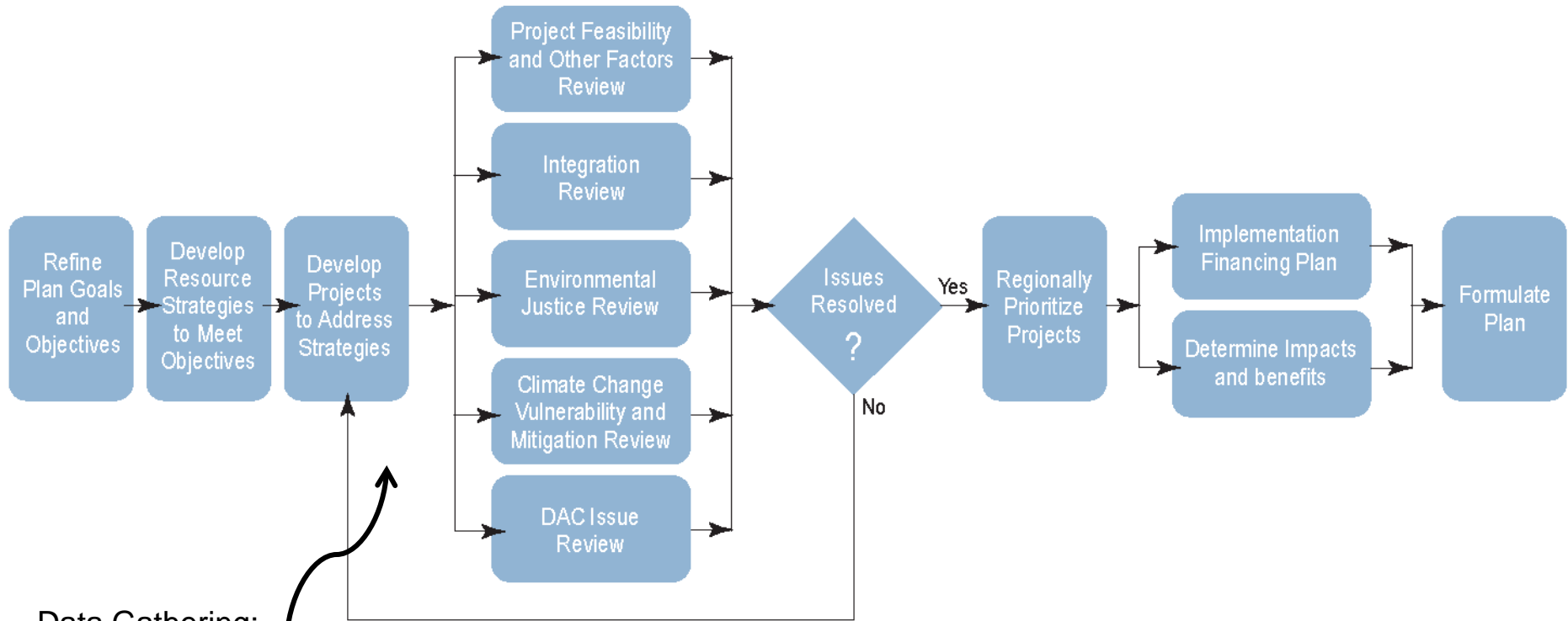
Questions?



Stakeholder Meeting Agenda

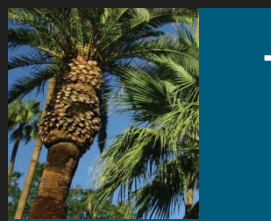
1. Introductions
2. Central Basin and West Basin Salt Nutrient Management Plan – (Phuong Ly, WRD)
3. Technical Documents
4. Project Submittals
5. DAC Issues Review
6. Environmental Justice Review
7. Integration with Neighbors
8. In-kind Accounting Reminder
9. Next Steps
10. Questions

IRWMP Development Process:

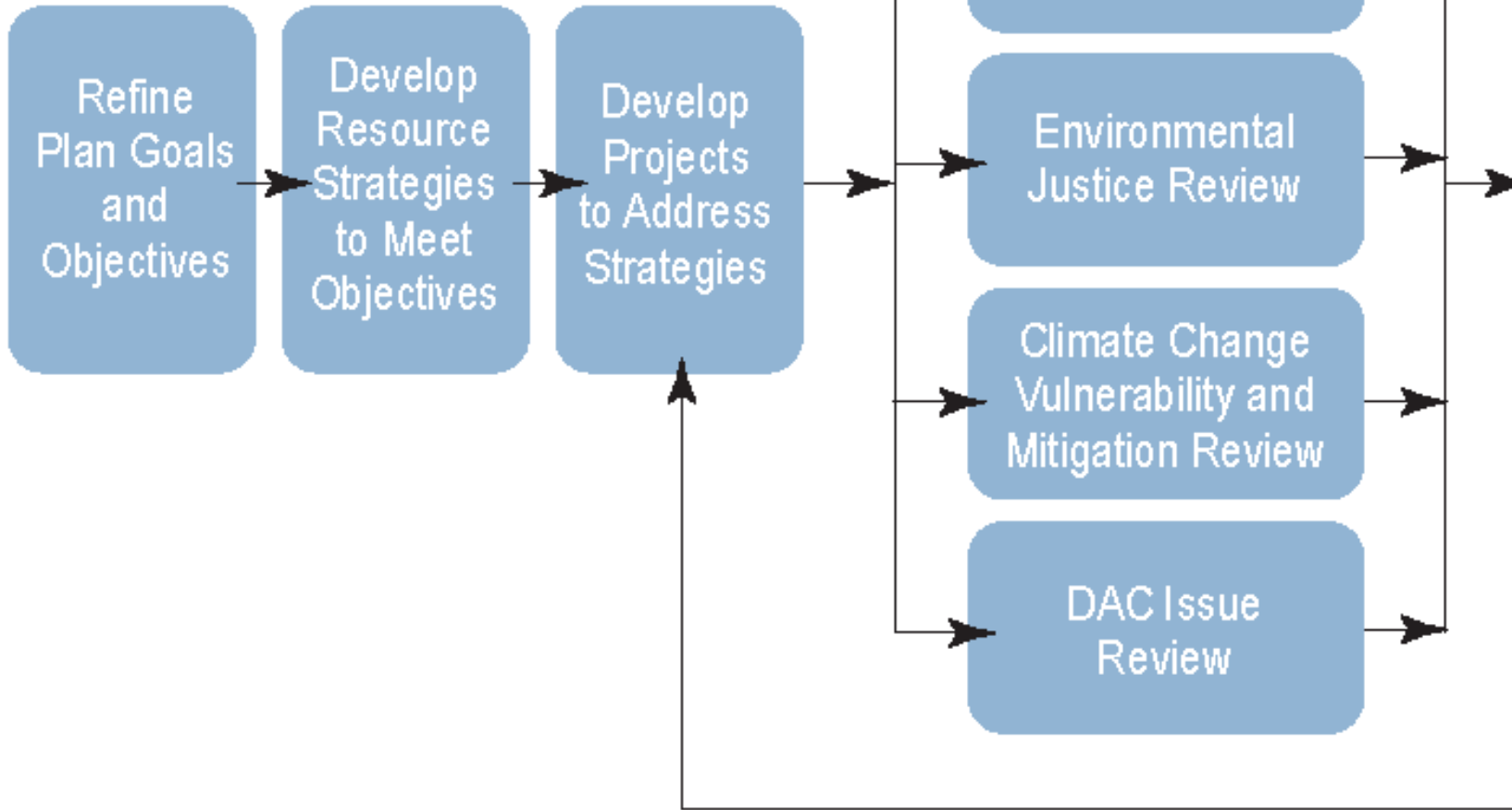


Data Gathering:

Water balance
Storm water Issues
Water quality data
Review groundwater
monitoring



Water Management Issues.....



Water Balance

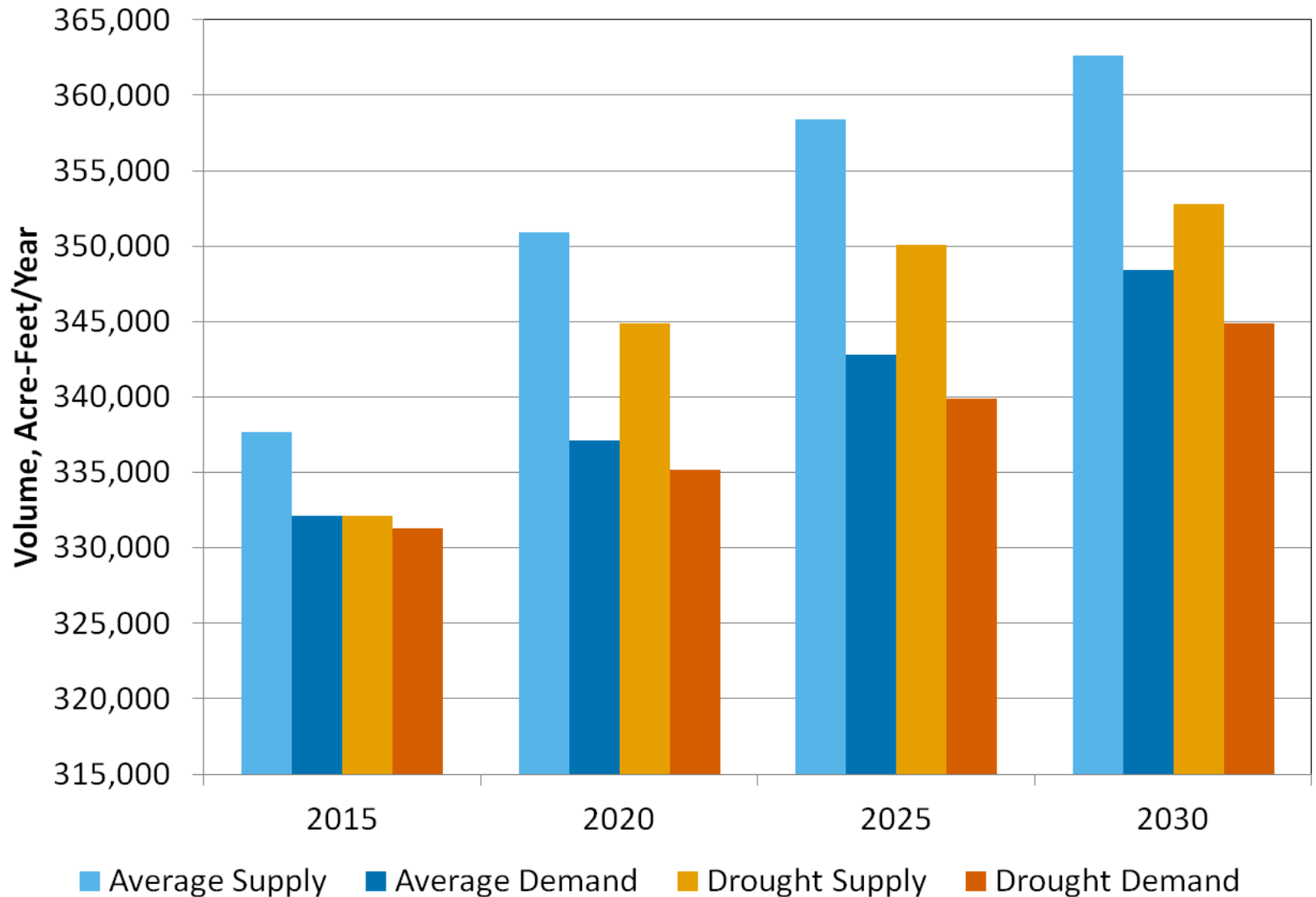
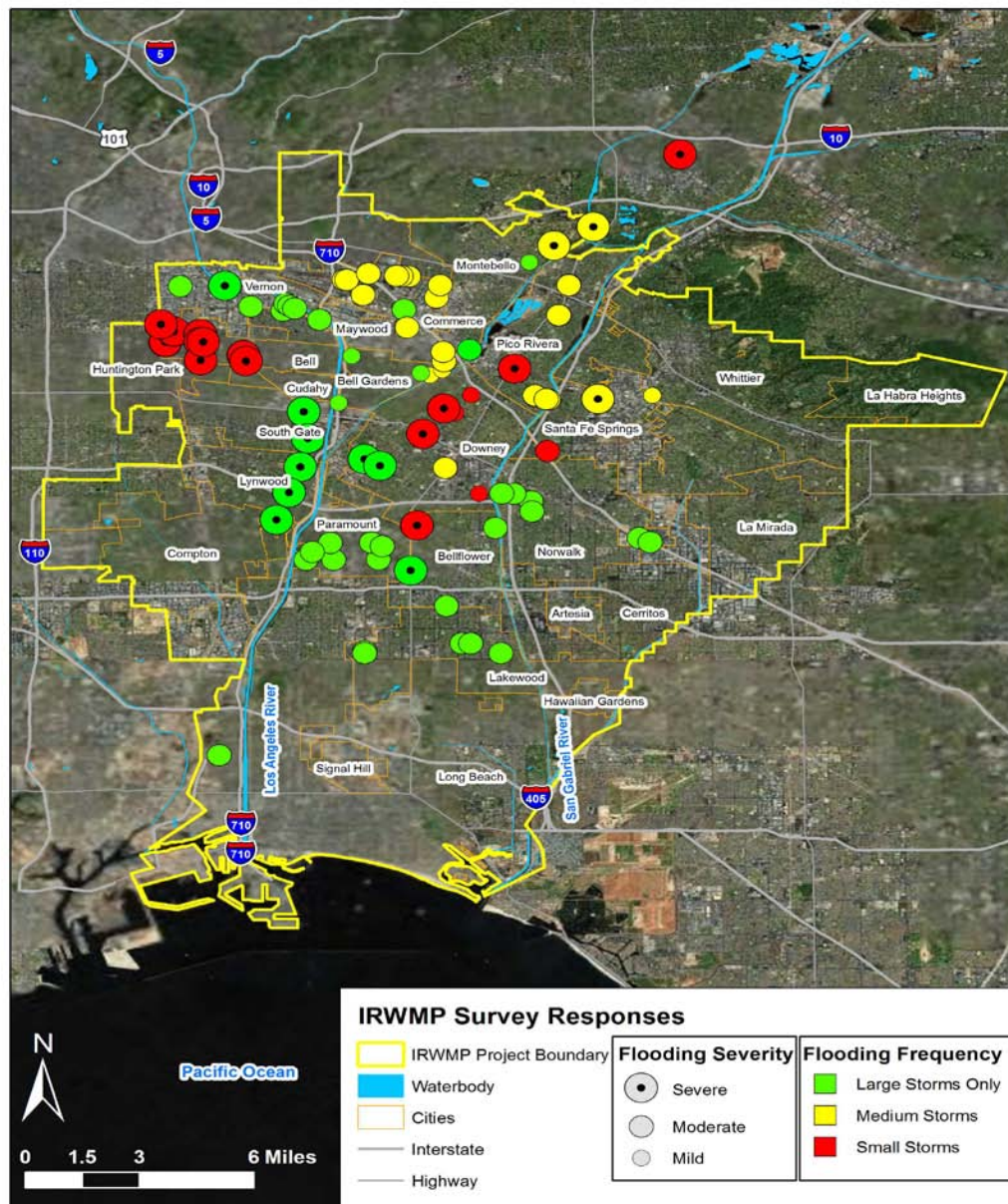


Figure 2 – Summary of Expected Supply and Demand in the Gateway Region for Average and Drought Conditions

Storm Water : Flooding Survey



Storm Water: Pollutants

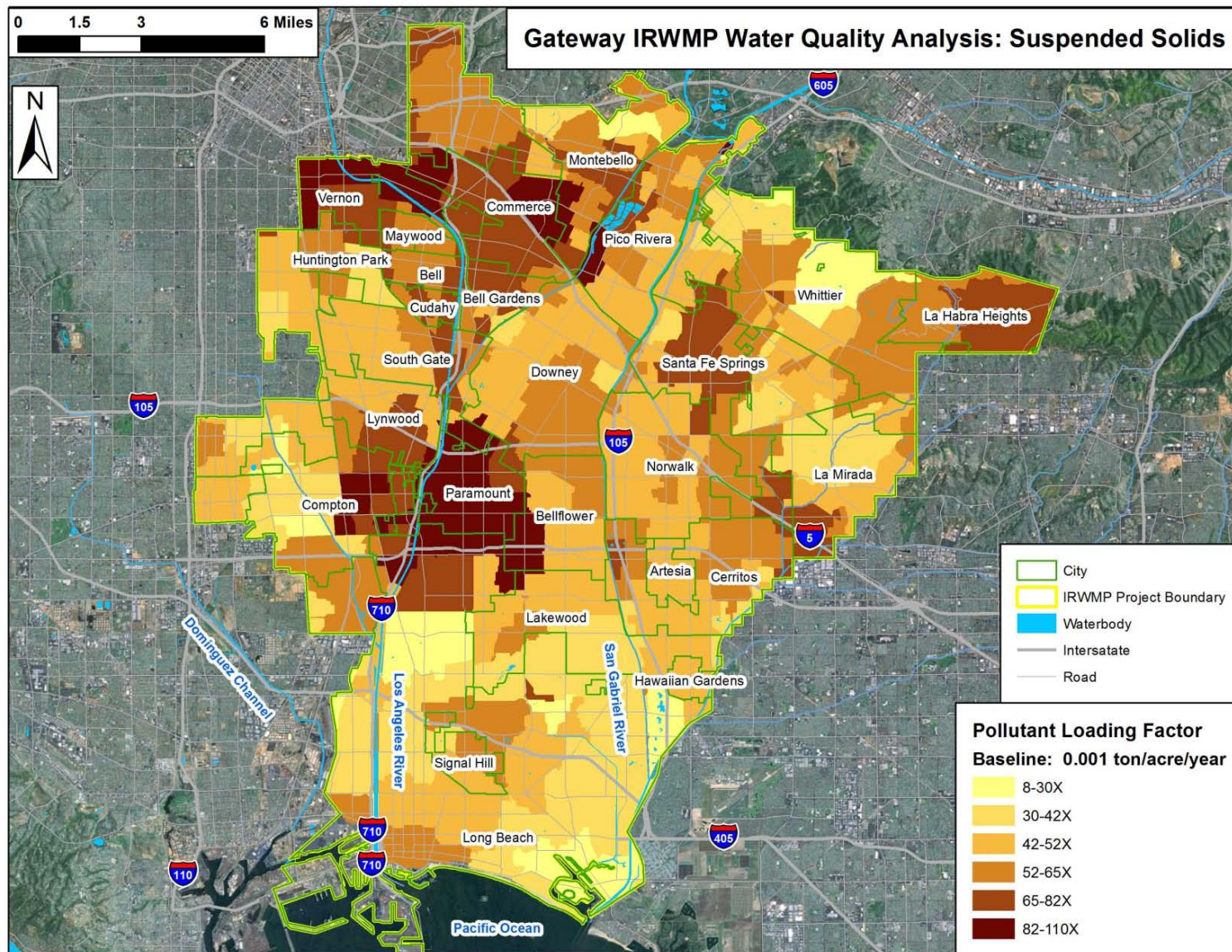


Figure 2-2 LSPC Modeling Results (1996 – 2008) – Total Suspended Solids

Storm Water: BMP's

Centralized BMPs (draining/treating larger areas)

Dry Extended Detention

- These devices store stormwater runoff and reduce stormwater peak flow rates. Stormwater enters the device through an inlet, which may be a grass-lined channel or stormwater pipe. An embankment detains stormwater, and an outlet riser controls the downstream release rate of the impounded water. Stormwater is detained for a longer period of time than in conventional dry detention ponds; the longer detention time allows for more removal of Total Suspended Solids (TSS) and nutrients from the stormwater.



Water quality (wet) ponds

- A wet pond maintains a permanent pool of water. This device stores stormwater runoff and reduces stormwater flow. The ponding of stormwater allows excess sediment to settle out of the water and encourages bacteria to use excess nutrients. Portions of other pollutants may also be removed. Stormwater first enters a forebay, which is a small depression lined with rocks that slows the incoming stormwater flow and settles out larger particles. The outlet structure and emergency spillway control the rate of water draining out of the pond.



Storm Water : Flooding Priority Areas

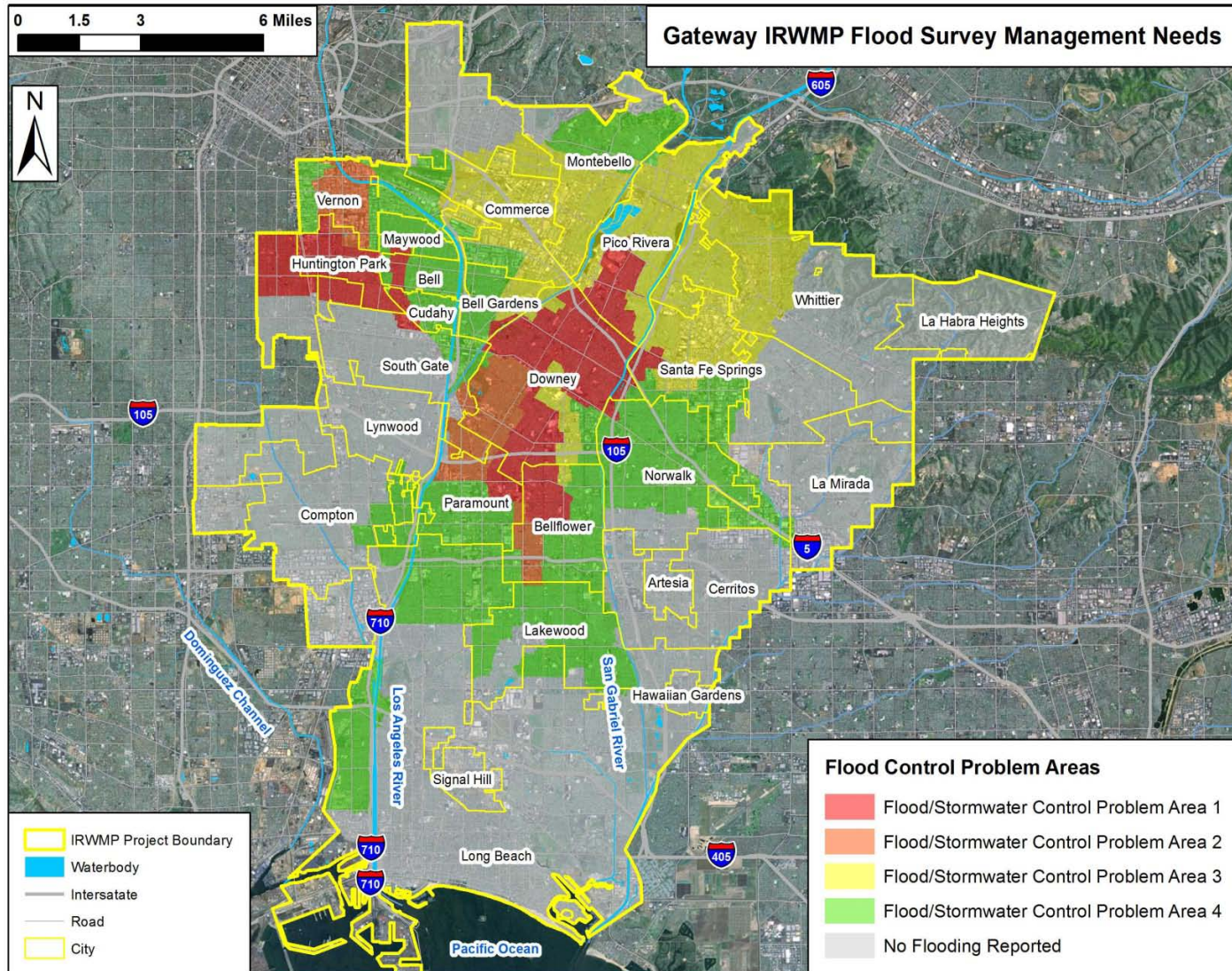


Figure 4-1 Prioritized Problem Areas for Flood Mitigation Measures

Storm Water: Water Quality Problem Areas

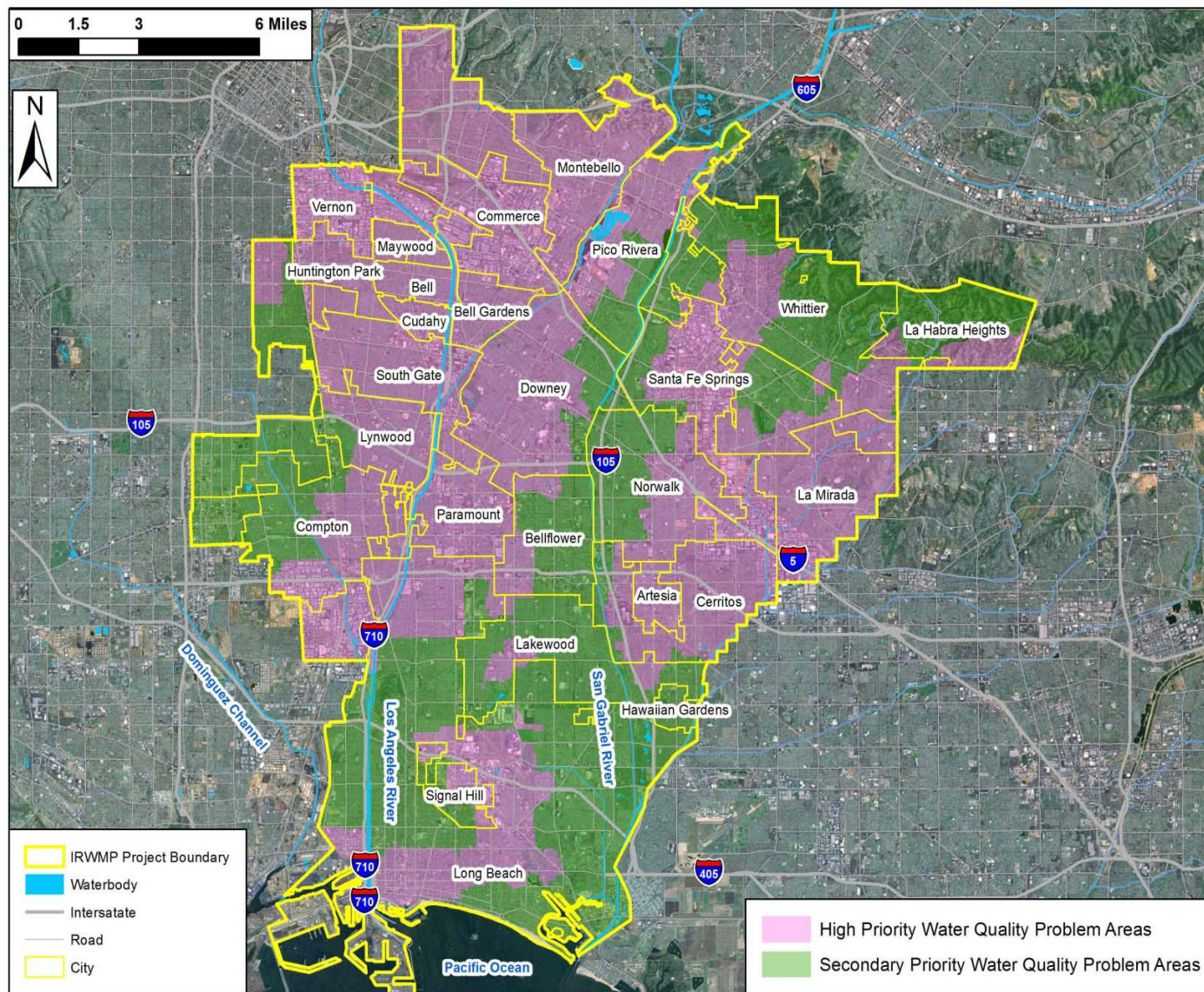


Figure 4-2 Primary and Secondary Problem Areas for Stormwater Quality Improvement Efforts



[Gateway IRWMP Project Information Form Distributed \[2.4 MB\]](#)

[Gateway Region Water Balance \[327 KB\]](#)

[Stormwater Problem Areas for IRWMP Planning \[4 MB\]](#)

Water Quality Maps

- [Figure 1 Color \[910 KB\]](#)
- [Figure 2 Iron \[910 KB\]](#)
- [Figure 3 Manganese \[910 KB\]](#)
- [Figure 4 Odor \[910 KB\]](#)
- [Figure 5 Special Conditions \[910 KB\]](#)
- [Figure 6 Sulfate \[910 KB\]](#)
- [Figure 7 TDS \[910 KB\]](#)
- [Figure 8 Turbidity \[910 KB\]](#)
- [Figure 9 Aluminum \[910 KB\]](#)
- [Figure 10 Arsenic \[910 KB\]](#)
- [Figure 11 Dichloroethane \[910 KB\]](#)
- [Figure 12 Carbon Tetrachloride \[910 KB\]](#)
- [Figure 13 Tetrachloroethylene \[910 KB\]](#)
- [Figure 14 Trichloroethylene \[910 KB\]](#)
- [Figure 15 Gross Alpha \[910 KB\]](#)
- [Figure 16 Dioxane \[910 KB\]](#)
- [Figure 17 NDMA \[910 KB\]](#)
- [Figure 18 PH \[910 KB\]](#)

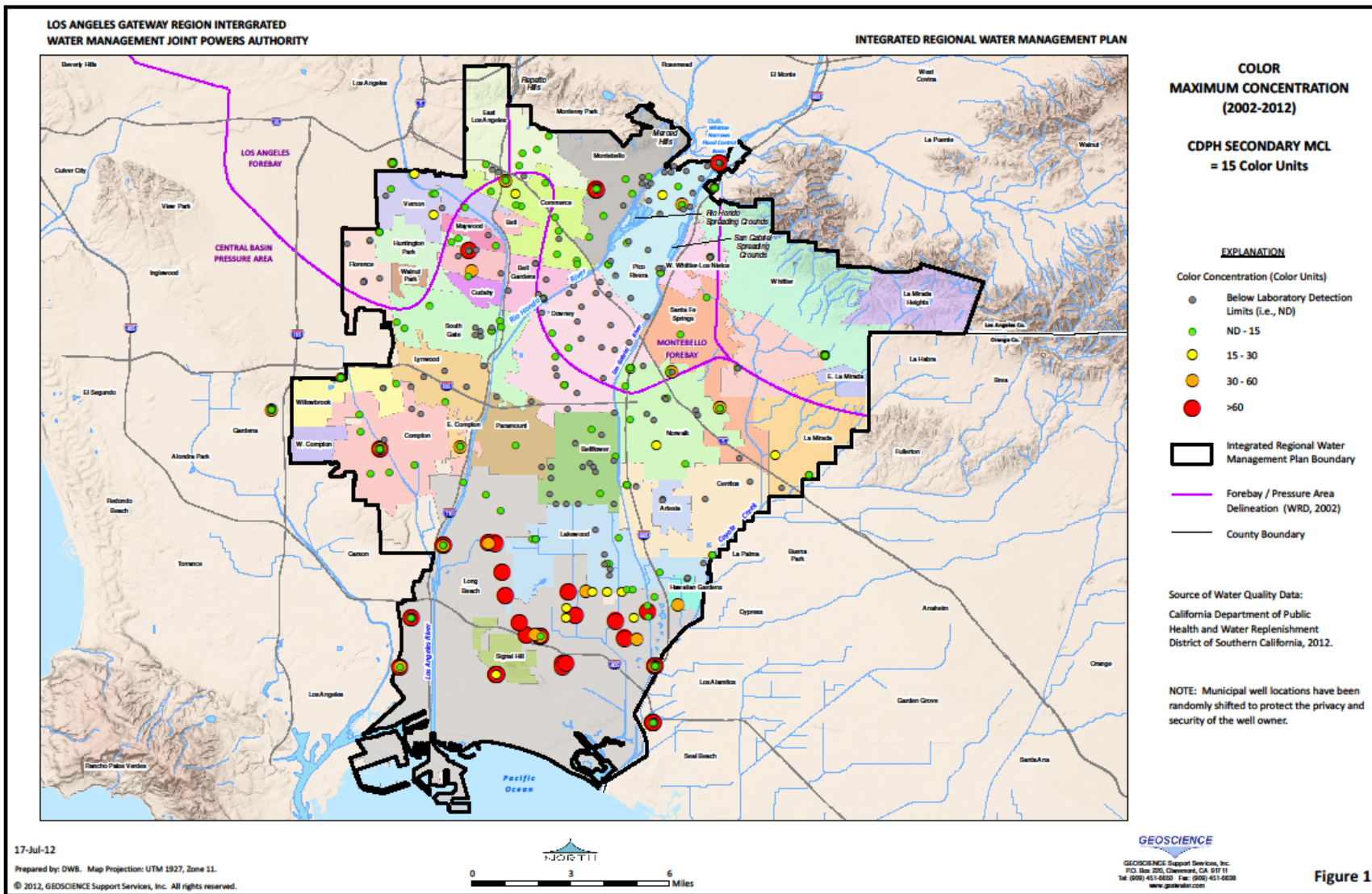
Stakeholder Meeting Agendas

- [Stakeholder or Interested Party Meeting Announcement \(Feb 9, 2012\) \[121 KB\]](#)
- [Gateway IRWMP Stakeholder Meeting #2 Agenda \(Mar 8, 2012\) \[700 KB\]](#)
- [Gateway IRWMP Stakeholder Meeting #3 Agenda \(April 12, 2012\) \[1.9 MB\]](#)
- [Gateway IRWMP Stakeholder Meeting #4 Agenda \(May 10, 2012\)](#)
- [Gateway IRWMP Stakeholder Meeting #5 Agenda \(June 14, 2012\)](#)

Stakeholder Meeting Presentations

- [Gateway IRWMP Public Presentation \(Feb 29, 2012\) \[3.13 MB\]](#)
- [Presentation at April 12 Stakeholder Meeting \[1.9 MB\]](#)
- [Presentation at May 10 Stakeholder Meeting \[1.9 MB\]](#)
- [Gateway IRWMP Stakeholder 6-14-12 Presentation Final \[3.1 MB\]](#)

Water Quality and Groundwater - MAPS



Data Base Tool – Web GIS

Gateway Interactive Map Viewer - Windows Internet Explorer

http://arcgis02.geiconsultants.com/gateway2/gis/?w=orgLayer

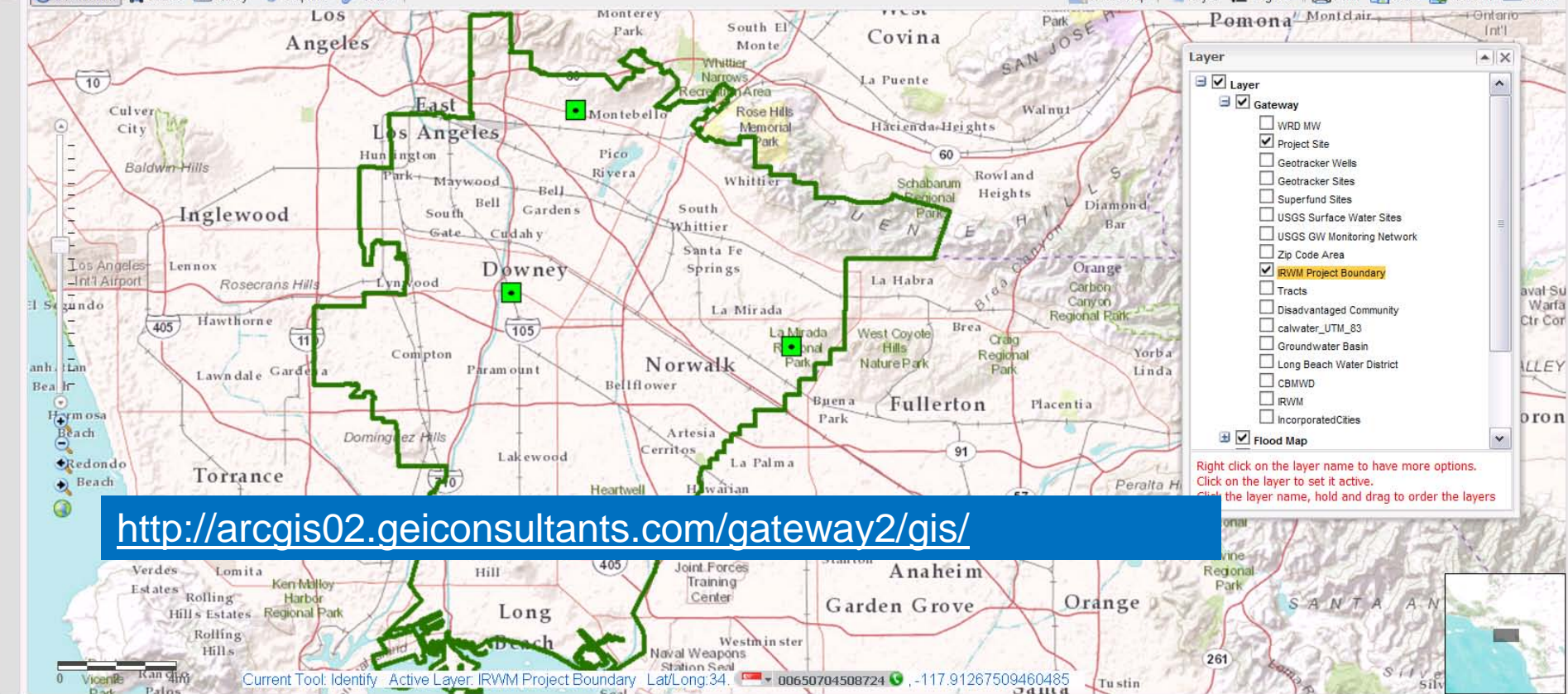
File Edit View Favorites Tools Help

Favorites Gateway Interactive Map Viewer

Los Angeles Gateway Region Integrated Regional Water Management Joint Powers Authority
Integrated Regional Water Management Plan

Information Select Query Graphics Tools

Base Map Layer Legend Print Save Refresh Share



<http://arcgis02.geiconsultants.com/gateway2/gis/>

Project Information Form



Los Angeles Gateway Region Integrated Regional Water Management Joint Powers Authority
Integrated Regional Water Management Plan

Project Information Form

<http://www.gatewayirwmp.org/>

PURPOSE

The Project Information Form is to be used by project sponsors to submit proposed projects to the Los Angeles Gateway Region Integrated Water Management Joint Powers Authority (GWMA) to be considered for inclusion in the Gateway Region Integrated Regional Water Management Plan (IRWMP). Submitted Projects should help the Region meet the IRWMP goals and objectives. Projects that may seek funding from Proposition 84, Proposition 1E, or other State sources must be included in the Gateway Region IRWMP to qualify for grant funding.

INTRODUCTION

To submit a project for inclusion into the Gateway IRWMP, please complete this form and submit (button on top of this page) or send it as an e-mail attachment to GatewayIRWMP@qeiconsultants.com. It is recommended that you print a copy of this form for reference as you complete the document. Project sponsors may find it helpful to first prepare the responses using word processing software, then cut and paste final responses into this form. Please note, anyone with the free Adobe Reader (located at: <http://get.adobe.com/reader/>) or Adobe Acrobat Version 8.1 or later can fill out, save, and submit this form.

1. Each proposed project requires a separate form.
2. If the fields of the form are not highlighted, please click on the "Highlight Fields" button on the upper right hand corner of the form. This will highlight all fields to be filled out. *Please note, fields outlined in red must be completed to submit the form.* You can either click on the field to enter data or use the Tab button to tab through the form.
3. To fill out a text field (i.e., a paragraph descriptor or address information), click the cursor in the field and type the necessary information. Some text is highlighted in **red**; these indicate questions that have further instruction. Place the cursor over the question and a box will pop up with that instruction. Help information is also listed at the back of this form.

Process Overview

Project
Submittal Form



Email



Response
File



Database

Project
Reviewer



Output





Disadvantaged Communities

- Review projects for their impacts on
 - Review projects to see that DAC interests are covered
-
- Need two stakeholders to work with Lorena



Environmental Justice

- “The fair treatment and meaningful involvement of all people regardless of race, color, sex, national origin, or income with respect to development implementation, and enforcement of environmental laws, regulations, and policies”
- This review looks for any unfair distributions of environmental burdens to some stakeholders and their communities
- Need two volunteers to work with GEI staff



Integration with Neighbors

- Greater Los Angeles IRWMP
Lower San Gabriel and Los Angeles Rivers (LSGLAR) Steering Committee
- Santa Ana Watershed Project Authority
- Upper Santa Clara River
- Watersheds Coalition of Ventura County
- Plan:
 - Project lists
 - Attend meetings
 - Integrate at project level



In-Kind Accounting

- Fill out the “GWMA In-Kind Expense Rate Certification” form.
- Provide a copy of your pay stub or other evidence that authenticates your hourly pay rate that you provided in the rate certification form above. This too only needs to be done once. Please block out and obscure any social security numbers, etc. not needed to verify your pay rate.
- Fill out the “Gateway IRWMP In-kind Timesheet” Task numbers and corresponding descriptions of those tasks are provided with the timesheet. Timesheets can be submitted monthly but not less than once every quarter
- Send all three items above to Bill:
 - Scanning and e-mailing them to GatewayIRWMP@geiconsultants.com
 - Mailing them to GEI Consultants, Inc., 2868 Prospect Park Drive, Suite 400, Rancho Cordova, CA 95670
 - Or bringing them to any Stakeholder Meeting.

Next Steps

- Continue to Collect and Develop Projects and Project Concepts
 - Projects Due September 5th
 - Perform Project Review
 - Apply Criteria for Ranking
 - Follow-up on In-Kind Timesheets
-
- **Next Stakeholders Meeting September 13**

